



NORTH GOWER GRAINS
There's No Culture Without Agriculture

DWIGHT FOSTER
613-880-7456
GEOFFREY GUY
613-880-2707
BOB ORR
613-720-1271

OFFICE: 613-489-0956
TOLL FREE:
1-855-SOY-CORN (769-2676)

CHECK UP-TO-DATE QUOTES AT
www.northgowergrains.com

Eastern Ontario Agrinews

Linda's
Bookkeeping & Consulting

Linda Vogel, CPB
www.lindasbookkeeping.com

Specializing in
Farm Bookkeeping
and Taxes

APPLE HILL OFFICE
3995 Lafleur Rd., Apple Hill, ON
Tel.: 613-363-0023
linda@lindasbookkeeping.com

PERTH OFFICE
40 Sunset Blvd. Suite 18, Perth, ON
Tel.: 613-466-0661
supportteam@lindasbookkeeping.com

PM40050631

Etcetera Publications Inc.

www.agrinews.ca

Vol. 41, No. 10

October 2018

La Coop Unifrontières

- Feed
- Crop Centre
- Grain Merchandising
- Hardware

St-Isidore
Tel.: 613-524-2828
St-Albert
Tel.: 613-987-2152

PRECISION DIESEL

DIESEL PERFORMANCE
613-774-6619

DIESEL DIAGNOSTIC SPECIALISTS

12024 Dawley Drive | Winchester, ON
www.pdpower.ca



**YOUR VISION.
OUR MISSION.**

WE ARE YOUR FARM
SUCCESSION SPECIALISTS



877.989.1997
OFSI.CA | FUTURE@OFSI.CA
BROCKVILLE CORNWALL KEMPVILLE WINCHESTER



Happy harvesting

Producers across eastern Ontario have begun harvesting their crops as the weather turns cooler in the face of fall. Many are hopeful for higher temperatures to get a good start on any winter wheat being planted this month. Despite some severe rain and storms in the area, pockets of dry skies could be found to get the jobs done.

Vogel photo



\$26,900.00

C-I-H MAXXUM 5220 TRACTOR
4 x 4, CHA, 5,200 Hrs., 4 Speed Power Shift, LHR, Air Seat, Radio, 2 SCV & Dual PTO.



\$11,700.00

JOHN DEERE 360 OFFSET DISC
14 ft., Heavy Duty, Split Gangs, Very Good Blades, Nice Paint & Condition.



\$18,900.00

FORD 6640 SE
2WD, C-H-A, Good Rubber, 2CV, Dual PTO, 4,850 Hrs., RHR, Works & Looks Good.



\$5,750.00

C-I-H 5100 SEED DRILL - 21 run DD, PW, GB, Rear Hitch with Hydraulics, Cylinder, Good Paint, Nice Unit.

Mck Sam Jakes
Financial Inc.
Appraisals,
Liquidators & Financing



DON ROUTHIER - BUY - SELL - TRADE

OFFICE: 613-525-5152 • Cell: 613-936-7523 • info@datractor.com
19855 Kenyon Concession 5, Alexandria, ON K0C 1A0 • www.datractor.com





Crop report

by Jeff Moore
AgriNews Staff Writer

EASTERN ONTARIO— THE SOYBEANS ARE BEING HARVESTED, THE WHEAT AND CEREALS ARE ALL REAPED AND THE WEATHER IS NOT COOPERATING, AGAIN. THE SOYBEAN CROP LOOKS GOOD IN EASTERN ONTARIO BUT IN WESTERN ONTARIO THEY ARE CLAIMING TO HAVE A NUMBER OF CROPS THIS GROWING SEASON.

Soybeans
The soybean crop is good this season despite the drought like conditions in late spring and early summer. A lot of the beans were also planted a little later than an average year due to wet conditions in May. However, the timing of the rains received were at the right times and caused a good crop.

Western Ontario had better planting weather and they are claiming a bumper crop according to OMAFRA crop specialist, Scott Banks. Banks claims that about 1/3 of the soybeans have been harvested. The moisture level is all over the map ranging from 11-18 per cent but that is mostly due to the timing of the planting season.

The yields a have been okay to date but not the bumper crop like the west which is considered exceptional. The yields are up to 65 bushels per acre but according to Banks, the long growing season beans have yet to be harvested to get a clearer picture.

To date there has been very little white mould associated with the soybean harvest. The dry weather happened when the beans were set and again when the beans were maturing and flowering with moisture coming when it was needed.

Most soybean plant pods contain usually three beans but in favourable conditions and lower parts of the plant, up four or five in a pod. If the plant is stressed at the maturing point, the plant will produce less beans per pod. The harvest is on time this year allowing the farmer to plant winter wheat.

Corn

Silage yields were good for eastern Ontario. The moisture average is still high at around four per cent for grain corn and just

slightly high for high moisture corn. The provincial average is above in western Ontario and about on par in eastern Ontario.

The Western Bean Cutworm has caused pockets of the area a little damage but the report is due out in early October. The recent storm in late September did not cause any problems for the most part but where the tornados struck there was some flattening.

There is a slight concern for the quality of corn due to mycotoxins (fusarium)

and there is some mould present in the area but only in pockets. The corn as of now is not really ready for frost so the weather needs to stay warm for a few more weeks.

Wheat

Winter wheat is being planted across Ontario after taking the soybean crop off. Most farmers with no till seeders just plant the wheat right after soybean harvesting but others have to do a little tilling due to the seeder they possess.

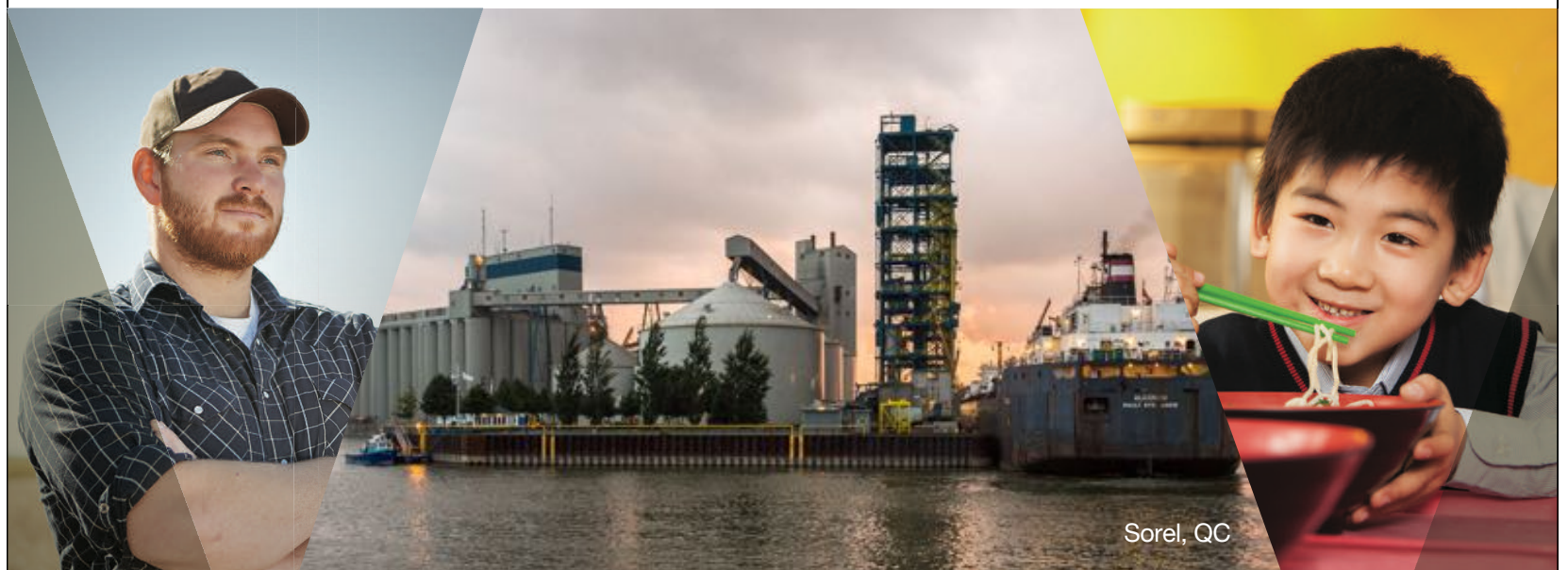


Corn

Continued on page 3

Richardson is *global*

Supplying Canadian-grown crops and food products to 58 countries worldwide.



Global demand for Canadian grains and oilseeds is stronger than ever and we are proud to help bring Canadian agriculture to the world. As a leading handler of Canadian grains and oilseeds, we continually invest in our people, systems and technology to keep pace with the demands of a growing global population.

With the largest and most efficient network of high throughput grain elevators and port terminals from coast to coast—from Vancouver, BC to Sorel, QC—Richardson is proud to deliver quality Canadian grains and oilseeds to millions of customers around the world.

TRULY INVESTED

richardson.ca

RICHARDSON

Boucherville 1.800.361.2820

Eastern Ontario 1.877.898.6874



www.agrinenews.ca

Highlights at IPM 2018

CHATHAM-KENT – COOLER TEMPERATURES AND SUNSHINE ON WED., SEPT. 19, DREW MORE VISITORS TO THE SECOND DAY OF THE 2018 INTERNATIONAL PLOWING MATCH AND RURAL EXPO (IPM 2018). ON TUESDAY, THE DAY OF THE IPM 2018 OPENING DAY, 12,740 PEOPLE WERE COUNTED ENTERING THE 850-ACRE SITE. OVER FIVE DAYS, IT WAS EXPECTED THAT IPM 2018 WOULD ATTRACT MORE THAN 80,000 VISITORS.

Wednesday's visitors were just in time for the establishment of a new Guinness World Record for the Largest Caesar Cocktail. Chatham-Kent is noted for its tomatoes, and author and television personality Chef Bob Blumer and his team worked with more than one tonne of local tomatoes, plus garlic, onion, horseradish and 60 litres of vodka. The ingredients were prepared in the World Records Tent throughout the morning and an afternoon parade brought them to

the Final Furrow Lounge for final mixing. After much anticipation by an eager crowd, the result was verified with an official of Guinness World Records – yes, at 588 litres, this was indeed the Largest Caesar Cocktail in the world! Incidentally, the large glass vessel that held the cocktail was previously featured in a Snoopy Dogg music video.

"A lot of people came together to make this happen," says Ellwood Shreve, chair of Project X, the attempt to set a number of Guinness World Records at IMP 2018. "We just wanted

to enhance the IPM experience. We stayed up late at night washing tomatoes. Most the ingredients were local, and that made the difference. If we needed extra tomatoes, we made a call and we got them."

In other highlights Wednesday, plowing competitions continued, with results posted on the IPM 2018 website. Queen of the Furrow Plowing Competition took place Wednesday, to be followed by Queen Dances on Thursday and Friday, and Queen Speeches on Fri., Sept. 21. Queens of the Furrow from across Ontario competed for the crown of the 2018-19 Ontario Queen of the Furrow but it was Oxford County's Derika Nauta who took the title.

"It feels unreal. I'm speechless," Derika said moments after being announced as the winner of this prestigious competition, sponsored by the Ontario Mutual Insurance Association. "I'm excited to see what's ahead."

Also on Wednesday, the Canadian Cowgirls Precision Drill Team performed its colourful equestrian drills, while Team Farmall Dancing Tractors demonstrated that traditional square dance can



Queen of them all

Queen of the Furrow Plowing Competition took place on the Wednesday of the 2018 IPM. After rigorous competition Derika Nauta of Oxford took the crown. *Courtesy photo*

be done with the precision driving of vintage tractors. HorsePower Live performers demonstrated their trick horse riding skills, and various singers entertained at several sites on the IPM 2018 grounds.

On Thursday, Canada's

Minister of Agriculture and Agri-Food, Lawrence MacAulay visited IPM 2018 to celebrate the diversity of agriculture in Chatham-Kent and visit an innovative brussel sprouts packing facility as part of the Growing Canadian Agriculture Tour.

Crop Report

Continued from page 2

The last week of September was the ideal time to plant winter wheat as it will be up and well rooted before the frost and snow comes. The quality of the harvest of winter wheat this season was good but the spring wheat seemed to have suffered with the dry weather.

Forage

There are still farmers in eastern Ontario cutting hay and the quality is good but they are beginning to risk next year's crop cutting this late in the season



Soybeans

especially if there is an early frost. Banks warns unless there is an immedi-

ate need for hay it should not be cut again this season.



WINKLER

STRUCTURES

The No Compromise
Fabric Structure

EQUIPMENT STORAGE

ANIMAL HOUSING

FERTILIZER STORAGE

HAY STORAGE

MACHINERY STORAGE

INDUSTRIAL STORAGE

WE'VE GOT YOU COVERED!

TOP QUALITY STRUCTURES AT COMPETITIVE PRICING

• More Purlins with X-Bracing • Up to 30% more steel • Replacement covers for all brands

Building Solutions for all Your Needs!



WE CAN

CONTRACTING



Joey van Koppen

PHONE 613-551-2843 WEBSITE www.wecancontracting.com

www.WinklerStructures.com



1-877-474-BINS

Innovative.
Efficient.
Proven.

Authorized Dealer

MERIDIAN

Smooth Wall Tanks in Stock!

Qty	Model	Tank Description	Capacity
1	715	7' Dia. Feed Tank	12.50 Tonne
1	815	8' Dia. Feed Tank	16.30 Tonne
1	915	9' Dia. Feed Tank	21.00 Tonne

horstsystems.com



HORST SYSTEMS (EAST)
2294 Cty Rd 31, Winchester

HORST SYSTEMS (CENTRAL)
290 Union Street, Elmira

The Editorial Page

The AgriNews is dedicated to covering and promoting agriculture, one of Eastern Ontario's most important economic sectors.

Editorial

Jobs, jobs, jobs, man!

In Ontario's agriculture and food sector, legend has it, there are more jobs than there are applicants and many of those jobs go unfilled for long periods of time.

There's no doubt that the legend is true at the lower end of the job scale, farm labour; Canadians are simply too affluent and pampered by social programs to get their hands dirty in barns and in farm fields, leaving many producers looking offshore for help. As a rule, Mexicans, Guatemalans and other nationalities appreciate a hired man or woman job and will work hard to keep it.

Now were getting a surge of new ag jobs in the market thanks to the country's latest cash crop, marijuana. Who would have thought only a few years ago that the plant that caused so much controversy and ruined so many lives, not of users but of dealers caught in the justice system, would now be a respected product legal for medicinal purposes and about to be legalized for recreational use.

With the multi-million dollar cannabis industry poised for what it expects will be a massive windfall starting Oct. 17, when Canada becomes the second country in the world after Paraguay to make ganga legal, jobs are expanding at all levels, from the production floors of the commercial grow-ops to the managing offices and marketing sales.

Completing the circle, the country is about to get its first Graduate Certificate Program in Commercial Cannabis Production from Niagara College which obviously recognizes an opportunity when one presents itself. The college boasts that one of its key strengths is its ability to anticipate and respond to emerging industries, trends and labour market needs.

In the case of legalized cannabis, the college says education will be a central component of its success. The new program will produce skilled and knowledgeable greenhouse and controlled environment technicians trained in all of the procedures, requirements, regulations and standards of the marijuana industry.

Located at Niagara-on-the-Lake, the new course is a one-year post-graduate and open to students with a degree in agribusiness, agricultural or environmental sciences, horticulture, or an acceptable combination of education and experience.

Who would have thought!

In the pink

A tip of the pink fedora is due to two farm-related outfits that strive to make a difference when it comes to raising funds for breast cancer research.

One is Embrun's Francois Latour who, at the recent Russell Fair, made clear his intention of reclaiming the world record for most-working antique threshers gathered in one place. Latour owned the Guinness Book record until it was "stolen" by a Manitoba group; he plans to get it back during the St. Albert Curd Festival next year.

As he indicated through the symbol of a pink milk can, all net proceeds will be turned over to breast cancer research in memory of his wife Suzanne who died of the disease in 2015, on the very day Latour claimed the threshing record for the first time. He raised \$30,000 the first time around and hopes to add considerably to that total.

Also backing the breast cancer research cause is Trucking for a Cure which held its fifth annual convoy in Prescott Sept. 15 before moving on to the ninth annual convoy in Woodstock Sept. 22. With their big rigs done up in various pink accessories, participating truckers mustered at South Grenville High School where visitors could learn more about the slogan: "Let's Drive Out Cancer One Truck at a Time."

Then, perhaps 100 strong, the trucks paraded along the main drag blowing horns and waving to pedestrians, causing a powerful, memorable spectacle. For the occasion, pink balloons adorned the route. The link to agriculture is a close one. While truckers aren't necessarily farmers, some practice both professions and, of course, highway transports are the primary means of moving farm products to market.

The Trucking for a Cure effort has raised more than \$100,000; interestingly, the group's website acknowledges that a small percentage of men are also breast cancer victims.

So congratulations to Trucking for a Cure for a job well done for close to a decade, and to Francois Latour for turning what could have simply been a threshing contest into a potent fundraiser.

AgriGab

Digging in

Despite the screams of anguish from the left side of the political spectrum, I doubt that no more than a few who voted for Doug Ford are disappointed with his performance to date. To see the big palooka barreling along on a Ford – what else would it be – tractor at the International Plowing Match at Pain Court did my heart proud and made me feel once again that we're in good hands here in Ontario.

Premier Ford is doing exactly what I'd hoped for when I cast my vote for the PCs. To name just a few actions: Putting the brakes on uncontrolled spending which had become the trademark of the previous Liberal administration; ending scams like Green Energy initiatives which subsidized uneconomical installation of solar and wind power farms producing electricity we don't need; and investing \$25-million towards fighting guns and gangs in Toronto, Ontario's roughest city, which needs all the help it can get.

The one action I wasn't crazy about was reverting back to the old sex education curriculum which teachers claim is way behind the times. I say leave it up to the various school boards to impart what they feel their students should know depending on age and circumstances. The part that has really grated on me about this issue is the snitch line whereby parents are urged to rat out teachers they feel are straying from the reinstated 20-year-old sex-ed curriculum. Teachers can't control questions they're asked in the classroom and should be at liberty to answer them openly and honestly whatever the curriculum handed down from on high.

And Ford probably should have waited a while before he came down like a ton of bricks on the size of Toronto council. However, timing was dictated by the fact a municipal election is right around the corner and Toronto council is flabby and very costly at 47 members. Can you imagine trying to get anything done at a table with 46 other people all fighting for attention. There's no way council would ever cut itself down to a reasonable size and I believe the premier is doing taxpayers a big favour by stepping in on their behalf and ordering a 25-member limit, the notwithstanding clause being used effectively and legally to help get the job done. Other bloated municipal councils should be paying strict attention.

Citified left-wingers trailed Ford all the way to Pain Court to demand that he "not plow our char-

ter". He basically ignored them as did the hundreds of spectators taking in the show. I wasn't there but I know you'd be hard-pressed to find anyone sympathetic to the Toronto whine other than the few who travelled there to once again complain that council is being bullied into greater efficiency.

New Democratic Party Leader Andrea Horvath accused the premier of dismissing the voice of "everyday people" who have legitimate concerns and worries. However, we haven't heard from those people because they don't care what happens to Toronto council. We've only heard from members of that council, from opposition politicians and from professional agitators.

I'm not sure about any farm experience Ford might have but he looked right at home on his blue Ford plowing a furrow and later posing for selfies. He pleased the crowd by coming out four-square behind supply management, insisting there should be no compromising when it comes to protecting the Canadian agricultural sector. Then he went to Washington and repeated his stand to Canadian NAFTA negotiators, endearing himself even further to Ontario farmers and rural residents. He also demonstrated that he can rise above partisanship, crediting the federal Liberal government for adopting the right stance and working hard on the trade pact.

While Ford chose the politically correct route in defending supply management, it would seem that after years of criticism from U.S. legislators about our protected dairy market, something will finally have to give. President Donald Trump has demonstrated over and over that he plays dirty and he plays hard, and when he gets a burr up his butt, something has to be done to ease the itch. Yea, I know... that's a pretty unsavoury image.

We have to give Trump something. He has already demonstrated he's prepared to waltz off into the sunset with Mexico and leave Canada in the lurch. Unless we're ready to flip the bird at the two southern partners and find our own independent way in the world, were going to have to concede more on supply management than we ever have in the past.



by Tom Van Dusen

The AgriNews is published by Etcetera Publications (Chesterville) Inc. in the first week of each month.

Publisher: **Etcetera Publications Inc.** Editor: **Kalynn Sawyer Helmer**
 Staff Writers: **Tom Van Dusen, Jeff Moore, Kory Glover**
 Production Manager: **Chantal Bouwers** Graphic Artist: **Angela Billharz**
 Advertising Representatives: **Brenda Fawcett: agrinewsads@gmail.com**
Anne-Marie Gibbons: agrinewsads2@gmail.com

P.O. Box 368, Chesterville, Ont. K0C 1H0
 Telephone: 613-448-2321 Fax: 613-448-3260
 www.agrinews.ca e-mail: agrinews.editor@gmail.com
 Annual Subscription \$36.75 (HST Included) within Canada

All advertisements appearing in The AgriNews are protected by copyright and may not be reproduced without the express written permission of the publisher.

Algonquin College gets approval for Agribusiness Program

by Kalynn Sawyer Helmer
AgriNews Staff Writer

PERTH – THREE YEARS AGO, WHEN KEMPTVILLE COLLEGE CLOSED THEIR DOORS, EASTERN ONTARIO LOST A MAJOR AGRICULTURAL EDUCATION HUB. WITHOUT THE SCHOOL, STUDENTS HAD TO TRAVEL TO GUELPH, QUEBEC AND OUTSIDE OF THE OTTAWA VALLEY FOR THEIR EDUCATIONS. FOR SOME STUDENTS, AGRICULTURAL DREAMS WERE PUT ON HOLD IF THE FEW AGRICULTURAL PROGRAMS DID NOT ACCEPT THEM. SEEING THE STRUGGLE FIRST HAND WAS WHAT MADE KEITH BEAN FROM THE OTTAWA VALLEY GET INVOLVED.

It began with meetings with the local Chamber of Commerce. Promoting the return of an agricultural school to Kemptville was the original idea until he and a few others approached Algonquin College. The idea had been thrown around before and with the help of Bean and his peers, has finally grown into a reality.

Starting in the fall of 2019, agricultural students will return to eastern Ontario in the Agribusiness course at the Perth Algonquin College Campus. Students will be able to start applying to the program as of October 2018. The program, a two-year business course, will feature small class sizes in a rural setting to help maintain the students' lifestyles.

"It's not going to teach students how to grow crops or raise cattle or anything. What it is going to teach them is the business of agriculture. We're going to teach them what you would normally learn in a two-year business program but all of the examples are going to be from agriculture," explained Bean. "So, in accounting they will use actual accounting for a farm. When the students are finished if they go back to run a farm or work for an agribusiness, they will understand how the numbers works, what kind of returns you should have and how to finance things, how to write a business plan and how to be a leader."

In order to achieve approval for the program from the Ministry, a program advisory committee and some Algonquin faculty

spent two years in consultations with the public, stakeholders and researching the best curriculum for the students.

"What we have done is consult very extensively, not just with the stakeholders that came to us but also with dozens of industry stakeholders. We've used the survey from the Ottawa Farm Show and then we've recruited what we feel are top notch program advisors to help us design a curriculum. What everybody has told us is that they wanted more business education in an agriculture program," said Martin Savard, faculty and lead program development.

The program meets the Ministry approved provincial standard for business while integrating agriculture into the classes. "There is going to be a combination of straight business introduction classes like accounting, computer systems, sales and marketing and economic issues. As well as technical courses that touch on soils, farm safety, animal health, crop production, dairy production and legislation. Then there are a lot of courses that put it all together. Accounting for agribusiness or a business plan course where students put together a five year plan for a new or current operation based on what they've learned," said Savard.

Instructors will be brought in from across the agricultural industry, with leading experts teaching the students how to succeed when running a farm or working in the service sector of agriculture. "We will teach them about different grants available and how to apply, working with the milk marketing board to improve their business, leadership and how to look after themselves," said Bean.

Unlike other programs in which the school runs a farm on the campus, the Agribusiness Program will instead visit farms and companies to get a wider array of experiences. "At first when we started to talk to the industry and said we couldn't have a farm, we thought maybe that was going to be a draw back, but everybody really sees that as a strength. We will constantly have access to new tech-

nology, constantly have access to a variety of ways to operate a farm or operate a service business, so we intend to take the students to producers in order to cover those topics," explained Savard.

Having just received approval and funding from the Ministry, work is underway to finalize the program. What is needed, Savard and Bean agreed, are more industry partners. The program intends to have a coop aspect, so organizers hope to attract as many producers and industry businesses as possible. Savard said anyone involved in the agriculture business is encouraged to reach out. "Seed consultants, financial planners and advisors, banks, producers, equipment manufactures and sales, any business that supports the industry," he said.

As well as the coop option, Bean and Savard said they hope to find as many partners as they can for hands-on learning days and guest lecturers. "We really need to get our industry partners on board. We want to be able to show the students the latest and greatest. Like the GSP systems and how you download them to improve yields for next year and who you work with to get your soil perfect. We want to expose them, give them a lot of contacts and launch them into the industry," said Bean.

For those interested in becoming a partner, Bean can be contacted at keith-bean@beancars.ca. The program advisory committee is made up of industry professionals who operate their own farms while working in the service sector. The committee includes: Keith Bean - PAC chair / Bean Chevrolet Buick GMC Ltd., Deb Knapton - Ontario Federation of Agriculture, Blair Dow - Algonquin College, Paul Crozier - BMO, Jeremy Nixon - Nixon Farms, Mark Nelson - Oakhurst Farms, Rick Schouten - Corner View Farms, Lois James - Ottawa Valley Seed Growers Association, Shelley McPhail - Agricorp, Bryan Brydges - Toprock Farms, Steve Holmes - Agromart, Harry Bennet - Harvex, Scott Weagant - Weagant Farm Supplies and Doug Savage - Holstein International.

I HELP FARMERS GET EMERGENCY LOANS!

I UNDERSTAND THE CHALLENGES YOU FACE!

I became a licensed mortgage agent with **Expert Mortgage** so that I could help farmers across Ontario.

I specialize in **AGRICULTURAL LENDING**. With over 400 lenders to back me, combined with my farming background,

I WORK HARD FOR YOU!

I REPRESENT OVER 400 LENDERS

Many provide 1st, 2nd and 3rd mortgages even with:

- No Financials
- Self-Employed
- Horrible Credit
- Mortgage Arrears
- Bankruptcy
- Pension & Disability
- Unemployed
- Property Tax Arrears
- Power of Sale

Ron Ashmore

Mortgage Agent
Expert Mortgage Broker Lic# 12079



Does Your bank offer payments **THIS LOW?**

Mortgage Amount	Monthly Payment	Bi-Weekly Payment
\$250,000	\$1,031.66	\$475.85
\$450,000	\$1,856.98	\$856.52
\$650,000	\$2,682.31	\$1,237.20
\$850,000	\$3,507.63	\$1,617.88
\$1,000,000	\$4,126.63	\$1,903.39



Rates from **2.26%**

O.A.C. Payments based on a 5 year Term. Rates Subject to change without notice.

Most banks lend using commercial lending guidelines that make no sense for farms!

Being a specialist in farm loans, I understand the farming community.

Talk to me if you would like to...

- Buy more land or new equipment
- Repair or construct new buildings
- Refinance your existing debts
- Buy Quota

I can offer qualified farmers...

- Up to 80% of FULL farm value
- Up to 40 year amortization
- Operating lines of credit

CALL - 7 DAYS A WEEK

for a confidential chat, or e-mail ron.ashmore@expertmortgagebroker.com
For more information visit my website at www.RonAshmore.com

705 934 2223 **TOLL FREE ACROSS ONTARIO** 1 888 934 2521



Together We Grow.

Two Canadian companies now as one, sharing values and a passion for doing what's best for Canadian farmers. With Maizex brand seed corn and Elite brand soybeans, Together We Grow.



It's the Yield

maizex.com | Follow us: [@Maizex](https://twitter.com/Maizex)



Maizex® and Design are registered trademarks of Maizex Seeds Inc.

Plan before planting: start site plans for the spring this fall

TORONTO – THINKING OF TREE PLANTING NEXT SPRING? FALL PLANNING BRINGS SPRING PLANTING. FORESTS ONTARIO AND ITS PLANTING PARTNERS WANT TO REMIND LANDOWNERS THAT FALL IS THE MOST OPPORTUNE TIME FOR PLANNING NEXT SPRING'S PLANTING ACTIVITIES.

Tree planting is an excellent way to increase the value of a property and make a positive contribu-

tion to environmental health. Forests Ontario offers funding assistance for tree planting through the 50 Million Tree Program (50MTP), providing the benefits of tree planting at a reduced cost. Eligible landowners may receive from 75 to 90 per cent coverage of total planting costs through the program.

The 50MTP has been designed to make the tree planting process as easy as

possible for landowners. If a property has at least one hectare (2.5 acres) of open land available for tree planting, all they have to do is register. A Forests Ontario representative or planting agency will contact landowners to confirm eligibility and determine the best approach for the owner and the property. Whether interested in improving a farming opera-

tion, creating wildlife habitat, increasing property value, leaving a legacy for future generations, or helping to fight climate change, planting through the 50MTP can help landowners achieve their goals.

According to Wade Knight, field advisor with Forests Ontario, planning tree planting projects carefully is an important way to protect an investment. "A

successful planting project requires a properly prepared site, good planting stock, tree species matched to the site and soils, and a plan to care for the seedlings after planting," explains Knight. Forests Ontario makes the planning process as convenient as possible by connecting landowners with the tools, expertise, and resources needed for success. Fall is

the best time for a site visit.

Through the 50MTP, landowners are able to improve their property while helping the government of Ontario reach its goal of planting 50 million trees by 2025. To learn more about this program, visit www.forestsontario.ca or contact the forestry program manager, Stephanie Burns, at 1.877.646.1193 ext. 222 or info@forestsontario.ca.

Apply this fall to begin planting next spring.



Looking it over

Forest Ontario field advisor Wade Knight meets with landowners to discuss site plans as part of the 50 Million Tree Program. Courtesy photo



Sizing up saplings

Azra Fazal, communications manager at Forests Ontario, and field advisor Wade Knight examine saplings on a tree planting site. Courtesy photo

QUICK UNLOADING WITH OUR 4 DUMPING PITS
DEDICATED SOYBEAN AND CORN DRYERS
LOTS OF WET STORAGE!

CALL FOR DIRECT SHIP PRICING



Sign up for our daily e-mail blog!

Check up-to-date quotes at www.northgowergrains.com

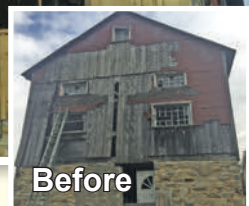
NORTH GOWER GRAINS
 There's No Culture Without Agriculture

DWIGHT FOSTER **GEOFFREY GUY** **BOB ORR**
 613-880-7456 613-880-2707 613-720-1271

2518 Lockhead Rd. West, North Gower, ON OFFICE: 613-489-0956 TOLL FREE: 1-855-SOY-CORN (769-2676)

FARMERS FRIEND 67

Over 50 years experience in business



- Custom Barn Repairs and Painting • Barn Floors and Beams
- Board Replacement • Roof Repairs and New Steel Roofs
- Custom Barn Doors and Windows

Call Richard at 613-877-8183 or email farmersfriend67@gmail.com

Serving Eastern and Western Ontario • FREE ESTIMATES

FALL CLEARUP AG



450M Round Baler

- ▶ Complete new design for high throughput with uniform, dense and heavy bales
- ▶ Simple with extreme low cost maintenance
- ▶ Available in different configurations for dry hay, silage with pre-cutter option

See this baler in action on YouTube



Tri-lobe 956

- ▶ 14.5 ft cutting width designed to cut and condition hay in tough field condition
- ▶ Exclusive cutterbar design modular design for durability and ease of maintenance
- ▶ Unparalleled Tri-Lobe conditioning system which accelerate curing time like no other in the industry. Excels in alfalfa with less bleaching of the crop while keeping precious leaves and nutrients.



5090M

- ▶ John Deere PowerTech Diesel Engine and transmission options
- ▶ Choose climate-controlled cab, fixed open station
- ▶ Mid-frame design for support and strength
- ▶ 32F/16R PowrReverser™ transmission for ultimate speed control



5R with loader

- ▶ 90-125 HP
- ▶ Easy-to-use transmission
- ▶ Optional panoramic sunroof
- ▶ Smooth hydrostatic power steering
- ▶ 8% tighter turning radius than others in its class



6130M

- ▶ PowrQuad™ PLUS and AutoQuad™ PLUS transmissions
- ▶ ISOBUS and tractor-baler automation offer new baling experience
- ▶ Pressure-and-flow compensated (PFC) hydraulic system
- ▶ Standard 21-GPM pressure-compensated hydraulics; 30-GPM pressure-flow compensated system available



5100E

- ▶ 50 engine HP
- ▶ Best-in-class visibility
- ▶ Thick comfortable seat
- ▶ 2-wheel-drive



5045E



6120E

- ▶ Loader-ready packages
- ▶ 12 forward/12 reverse (12F/12R) and 24F/12R, PowrReverser™ transmission
- ▶ Engine, 4.5L PowerTech™ power and specifications
- ▶ Tire combinations; two-wheel-drive (2WD), mechanical front-wheel drive (MFWD) and rear axle - radial tires
- ▶ ISOBUS and tractor-baler automation offer new baling experience

www.greentech.ca

16 STORES TO SERVE YOU!

1 855 465-2483

QUEBEC

Ange-Gardien	450 293-8146
Chicoutimi	418 668-5254
Coaticook	819 849-0300
Laval	450 661-9150

Mirabel	450 258-2492
Pike-River	450 248-7597
Sherbrooke	819 564-8850
Ste-Agathe	819 326-2655
St-Anaclet	418 722-7455

St-Bruno (Lac St-Jean)	418 668-5254
St-Hyacinthe	450 799-5533
St-Pascal	418 492-3068
Varenes	514 875-6688

ONTARIO

Carp	613 836-7191
St-Isidore	613 524-5353
Winchester	613 774-2883

Fall is back; rodents too

by AJ Al-Rajab, PhD
AgriNews Staff Writer

IN FALL, THE COLD WEATHER IS APPROACHING IN FAST STEPS AND IT'S TIME TO RODENT-PROOF YOUR FARM.

Rats, mice and other rodents seek a warmer shelter to spend the winter, having access to food sources, and avoid the natural predators. Rats and mice do not hibernate during winter and their habits remain consistent regardless of the environment (outdoor or indoor). Rodents can cause major problems by transmitting diseases, consuming feed, damaging the structure and causing distress to animals and humans. Back in 2013, the Ontario Ministry of Agriculture, Food and Rural Affairs reported that 89 per cent of swine producers and 80 per cent of poultry producers had rodent problems. No recent data was found except a few reports mentioning the rise of rat populations in different cities of Ontario in the last years.

The two most found species of rodents on farms in Ontario are the brown Norway rat (*Rattus norvegicus*) and the house mouse (*Mus musculus*). Both species originated from Asia, then they spread worldwide with the development of agriculture which provided their shelter and food supplies. They are nocturnal, omnivorous, bred year-round under favourable conditions and underground dwellers in the wild. Rats and mice have poor eyesight, colour blind, relying more on their hearing, excellent senses of smell, taste and touch.

The brown rat measures 40-50 centimetres (from nose to tail, the tail is longer than the body) and weighs 300-500 grams. On farms, it lives in territorial colonies of 50-300 individuals, its territory (home range) is 25-150 metres in diameter, and can move up to three kilometres away and back in one night. The female rat has four to six litters per year, each containing six to 12 baby rats, each litter takes only three weeks after conception. The newborn rats grow rapidly and can eat solid food at the age of two to three weeks; they reach the productive maturity at three months, the lifespan of a rat is from two to three years. Rats breeding often peak in spring and fall, while the reproductive activity declines in summer and often stops completely in winter, depending on the habitat.

Otherwise, the house mouse measures six to nine centimetres and weighs 12-30 grams. Its home range is less than 10 metres squared and the daily movement is only a few meters. A female mouse produces five to 10 litters per year, each containing six to 12 puppies, the lifespan of a mouse is one to two years.

Why control rodents on farms?

Rodents are the most destructive vertebrates in the world; they cause damage to farms in many forms:

Diseases transmission

Rodents are considered as carriers of about 45 diseases, i.e. swine dysentery, salmonellosis, leptospirosis, trichinosis, toxoplasmosis, hantavirus, and tapeworms. Rats and mice can carry fleas and lice on their body and pathogens on their feet which increases the spread of disease. These diseases carried by rodents are considered as serious threats to the animal health on farms.

Damage to structures

Rodents can cause electrical fires by chewing the wires of the building or the machines inside the facility; also they enlarge gaps in the walls and foundation, attics, and plumbing. Rodents can destroy the insulation of the facility which causes the increase of energy cost in addition to the cost of re-insulation. If there is any idle vehicle around, rats and mice can build nests from a combination of natural and synthetic materials in the engine compartments and ventilation systems.

Feed consumption and contamination

An adult rat consumes daily about 25-30 grams of feed. Consequently, if the farm contains a colony of 100 rats, they will consume more than one ton of feed in one year. Mice consume less quantity of feed of about five grams daily per individual. Rats and mice contaminate 10 times the amount of feed they eat with their dropping, urine and hair.

How to identify the rodent infestation?

There are different signs of rodent infestation in your farm: Visual sighting of rats or mice inside or around the building especially at night. If you observe rats in daylight, it is a sign of high infestation and over population; sounds of gnawing, squeaks, or climbing in walls; presence of droppings near the food supplies or along the walls; rodent odours: rats cannot control their urine and they urinate wherever they go, they leave a sewer like odour on their pathway; gnawing marks, rats and mice gnawing persistently on non-food materials (wood, plastic, etc) to keep their incisor teeth honed.

Tips to prevent rodents

Some practices may help effectively to keep rats and mice out of your barn or facilities: Repair cracks and seal any holes around doors, windows and roofs to minimize the potential access of rats and mice to the structure. Surprisingly, rats and mice can get through a hole of 1" and 0.5" in diameter, respectively; trim all trees in direct touch with the building, rats are great climbers and might

Continued on page 9

Tel: 613-932-4413
Fax: 613-932-4467

ST. LAWRENCE STRUCTURES ST-LAURENT INC.

1440 Tenth Street East, Cornwall, Ontario

Mailing Address: P.O. Box 25, Cornwall Ontario, K6H 5R9

FARM . COMMERCIAL . HOME . AUTO

Patterson Hadden & Brown
INSURANCE BROKERS

613.258.5991
www.PattersonHaddenBrown.com

La Coop
fédérée

Alain Ménard
Merchandising Manager
East and Central Ontario

Grower Direct Exports
205 Peter St.
Port Hope, Ontario L1A 3V6
alain.menard@lacoop.coop

Phone: 905-800-1056
Cell: 519-504-4693
Toll-free: 1-844-888-6720

ARCAND
Party Tents

ARCANDPARTYTENTS.COM
258-9444
ANY SIZE OF TENT - 30 TO 6000 PEOPLE

DRUMMOND PTO Driven Generators

Need Power?
Have tractor?
No problem...

DRUMMOND PTO driven generators

Now In Stock
40 & 60 kw
PTO Generators

DRUMMOND PTO GENERATORS

10 to 135 kw
single or three phase

Five Year Warranty!

Now Available
Portable Generators
2.5 to 12kW

All Sizes of
Pole Top Switches
Available

**Kohler Single & 3 phase
Commercial & Domestic
Gen-Set all sizes**

N. BEEHLER ELECTRIC LTD.
Electric Contractor
17 Beaver St., Berwick, Ont.
Tel. 613-984-2877 Fax: 613-984-2965

ANDRE MENARD & SONS

GRAIN ELEVATORS

LICENSED ELEVATOR & GRAIN DEALER

PURCHASER OF CORN, BEAN & WHEAT

OFFERING STORAGE, DRYING, TRUCKING & CUSTOM WORK

GRAIN, HOPPERS, DUMP TRAILERS & DROP DECK TRAILERS

TRANSPORTATION IN ONTARIO & QUEBEC

FOR MORE INFORMATION CALL ELEVATOR: 613-774-4246 • HOME: 613-774-3305 • CELL: 613-229-2142
ELEVATOR AT 12650 ORMOND RD., WINCHESTER, ON (MARIONVILLE)

www.agrinenews.ca

Fall rodents

Continued from page 8

use the trees to infiltrate into the roof, also trim under shrubs; eliminate all sources of food or water around the building. All garbage containers should be rodent-proof and closed properly all the time; keep tall grass, bushes and mulch away from building foundation; keep ground bare at least 15 centimetres from structure.

How to control rodents?

In the event that a rodent infestation occurs on your farm despite applying the above preventative tips, rodent control should be managed through an integrated pest management (IPM) approach handled by a professional pest control company. Before starting a control program, the rodent causing the damage should be identified correctly. The pest control technician should inspect the building from inside and outside to determine the infiltration points and the infestation level (low, medium, or high), then, a written inspection report should be delivered with the observations, recommendations, and the action plan.

However, the rodent control program is a combination of mechanical and chemical treatments. In the organic farms, the chemical treatment should be excluded.

Mechanical control

There are different physical means that could be involved in the rodent management program. They include:

- Live traps
- Humane traps could be a

cage or a trapping box designed for small animals. After the catch, the animals will be taken away and released again. This humane practice might help solve the problem from a site but transfer it to another area.

- Snap traps

In case of low infestation, snap traps or box traps are efficient to reduce the rodent population. These traps should be baited to attract the rodents; usually rats prefer meat based baits, while mice favour peanut butter. Rats are smart animals and distrustful of anything new in their environment (home range), so it is recommended to leave the baited traps non-set for a few days to allow rats to get used to its presence, if a rat does not get caught in the snap trap, it learns how to avoid it in the future. There are different models of snap traps and catch boxes in the market, the size of trap is adopted for the target pest either rats or mice.

- Electronic rodent traps

The principle of these traps is similar to snap traps, but the rodent will be killed by an electric shock. Some recent models are equipped with Wi-Fi and alert the user on his phone if there is a catch. The electronic traps are re-usable, but more expensive than snap traps and the battery needs to be recharged after each catch.

- Glue boards

Glue boards are cheap and very effective against mice in average clean areas, but they are not efficient in the dusty areas. However, an adult rat is often able to pull itself free from a giant glue board.

- Electronic rodent repellent

The sound and ultrasound devices might be effective in small areas to keep the rats or mice away, but rodents become quickly used to them in a few days. Also, these devices may cause distress among the farm animals.

- Chemical control - Rodenticides

The chemical control is based on the use of rodenticides to eliminate the rodents from a specific infested area. Obviously, this practice is not valid in the case of organic farms where the use of chemical pesticides is not allowed.

Rodenticides vary depending on the active ingredient and their mode of action. However, the main categories of rodenticides are 1) anticoagulants: include bromadiolone, chlorophacinone, warfarin and diphacinone; and 2) acute poisons: include zinc phosphide and bromethalin. Also, some fumigants are used in silos and on stored grains and crops-post harvest. Otherwise, the cellulose from powdered corn con is considered as a natural and eco-friendly rodenticide alternative to the anticoagulants. Sale, use, transportation, storage, and disposal of pesticides in Ontario are regulated by the Ontario Ministry of Environment, Conservation and Parks.

In conclusion, extermination of rats and mice on livestock and poultry farms is a difficult task and should be taken seriously. The producers are recommended to apply the prevention strategies to rodent-proof their facilities. If the infestation persists, farmers may find professional advice and solutions from a certified pest control firm.

Breakthrough discovery promises resistance against soybean disease

ONTARIO – STEM AND ROOT ROT CAUSED BY THE FUNGUS-LIKE DISEASE PHYTOPHTHORA SOJAE (P. SOJAE) CAUSES APPROXIMATELY \$50-MILLION OF SOYBEAN YIELD LOSS IN CANADA EVERY YEAR. A PROMISING NEW DISCOVERY AT AGRICULTURE AND AGRI-FOOD CANADA (AAFC) MAY SIGNIFICANTLY REDUCE THESE LOSSES.

Dr. Sangeeta Dhaubhadel isolated 11 genes in soybeans which function in a critical step in the fight against the disease. One of these genes – GmCHR2A – will be key to breeding new disease-resistant varieties.

Until now, farmers have relied on traditional strategies to try to reduce P. sojae infection. However these methods have been ineffective.

Dr. Dhaubhadel's study is the largest and most comprehensive of its kind. It found a naturally occurring trait in soybeans that improves resistance – the rapid, increased production of isoflavonoid glyceollins. Chalcone reductase (CHR) is the key enzyme which leads to the production of these glyceollins, and their rapid, increased production is linked to strong partial resistance to P. sojae, a very durable and broad-spectrum type of resistance.

"This is the first robust study on identifying CHR genes in soybeans which are key to creating varieties resistant to P. sojae. A

previous study identified only two CHR genes. This research is good news for soybean farmers as they can expect to have soybean cultivars that are more resistant to P. sojae," said Dr. Dhaubhadel.

Very little was known about CHR genes. As P. sojae is a soil borne disease, Dr. Dhaubhadel knew that when P. sojae infection occurred, the resistance genes had to be expressed in the roots. She infected soybean stems with P. sojae to see if any CHR genes were activated or not. Then she analyzed existing soybean literature to see if there were any QTL markers (quantitative trait loci) linked to P. sojae resistance. QTLs are genomic regions that contain multiple genes. A total of 77 QTLs were found to be linked with resistance, and in these areas, one out of 11 CHR genes was discovered to be the most critical in the search for resistance – the GmCHR2A gene.

As an added bonus, this gene may also be effective in the fight against other fungal or bacterial diseases, and possibly even initiate a defense response to insects like the soybean aphid.

Dr. Dhaubhadel is working with Dr. Istvan Rajcan on the search for additional genes and on creating a gene-specific marker so soybean breeders can create new P. sojae-resistant varieties quickly.



BG 50
Gas Handheld Blower

Displacement: 27.2 cc
Power Output: 0.7 kW
Weight: 3.6 kg (7.9 lb)

STIHL

\$189⁹⁵
MSRP \$219⁹⁵

BGA 45
Battery Blower
18V Li-Ion 2.0 Ah / 2.0 kg (4.4 lb)

BGA 56
Battery Blower
36V Li-Ion 3.0 Ah / 2.1 kg (4.6 lb)

SH 56 C-E
Gas Shredder Vac/Blower
772 cc / 1.7 kW / 5.2 kg (11.5 lb)

BR 600
Gas Backpack Blower
648 cc / 2.8 kW / 9.8 kg (21.6 lb)

BR 700
Gas Backpack Blower
848 cc / 2.8 kW / 10.6 kg (23.4 lb)

\$159⁹⁵

\$259⁹⁵

\$279⁹⁵

\$649⁹⁵

\$699⁹⁵

STIHLCanada www.stihl.ca

STIHL MOTOMIX™ – THE ULTIMATE PREMIXED FUEL
AVAILABLE EXCLUSIVELY AT YOUR LOCAL STIHL DEALER!

Dealers may sell for less. Pricing on all chain saws, power tools and accessories will remain in effect until November 30, 2018. Illustrations and descriptions are as accurate as possible at the time of publication and are subject to change without notice. STIHL Limited is not responsible for a printing error. The local STIHL Dealer has the final authority in set product pricing. Pricing valid at participating dealers only.
*Weight without fuel. †Integrated battery. ‡Weight without battery.

- 1000 ISLAND SALES & RENTAL**
Brockville, Ontario 613-345-2753
- ALLAN JOHNSTON REPAIR & SALES**
Metcalfe, Ontario 613-821-4263
- BEACH HARDWARE**
Prescott, Ontario 613-925-3933
- DAN R EQUIPMENT**
Plantagenet, Ontario 613-673-5129
1-888-755-DANR(3267)
- EASTERN ENGINES POWER EQUIPMENT**
Williamsburg, Ontario 613-535-2488



ALL THE BEST FEATURES AN OUTDOOR FURNACE SHOULD HAVE

G-CLASS SINCE 2011. PROVEN!

- The only gasifier with all the best features visit polarfurnace.com to learn more
- Epa certified. Meets 2020 emission levels*
- Easy to operate and easy to clean
- Burn up to 60% less wood
- All fire, no smoke



VISIT YOUR LOCAL POLAR DEALER:

GARRY Munro
PLUMBING & HEATING LTD.
SALES & SERVICE

564 Main St.,
Winchester
613-774-9980
garrymunroplumbingandheating.com
email: gmunropandh@gmail.com

From dairy farms to OFA: Resi Walt

by Kory Glover
AgriNews Staff Writer

PEMBROKE – GROWING UP ON HER FAMILY'S DAIRY FARM, MILKING AND FEEDING COWS, RESI WALT FOUND HER PASSION IN AGRICULTURE AND HAS BEEN WORKING AS A MEMBER SERVICE REPRESENTATIVE (MSR) FOR THE ONTARIO FEDERATION OF AGRICULTURE (OFA) SINCE 2016.

"Once I graduated from university, I was working in Guelph at Farm and Food Care Ontario, a public relations, non-profit organization that serves the agricultural society and they're all about agricultural awareness," said Walt. "So, I was working there and my predecessor for this position was retiring so it became open. My sister encouraged me to apply for it because it would mean that I would be able to come home to where I'm from and that was very appealing to me. I really wanted to work in the agricultural industry where I'm from."

According to Walt, a MSR, or a field rep as she describes as a less-convoluted term, are not the ones who sit in the office, they're the ones out in the field servicing the county that they live in.

"We field calls about absolutely anything. Basically, if anybody is having any issues with neighbours, a municipality and maybe employees," she said. "Majority of the calls we get usually involve anything about land use and land use planning. One example could be a neighbour trying to get their lot severed and they're worried that it's going to be close to their barn, so what can they do to make sure the process goes smoothly. We then refer them to the MDS guidelines and make sure their municipality is implementing those guidelines."

Walt gained much acclaim and praise back in 2017 for her notable project, Farm 911: The Emily Project, where she worked to get civic addresses to their vacant farm properties.

"I think it's quite common across the province but we definitely noticed a problem here. Vacant farm fields, like where farmers grow crop, were not given civic addresses when they were first put in 20 years ago because there wasn't a building on them, so they figured there would never be a land line or phone call made from there," she said. "But fast forward to now where everyone has a cell phone on them, something goes wrong and you need to call the ambulance, you can tell them where you are because they have now been given civic addresses."

Walt had been working on the project since

2016 approaching the municipalities to let them know that residents had a desire to have this project implemented. She finally unveiled it at the Hasting's County Plowing match in August 2017.

"It was a huge success, local news outlets picked it up and we were so grateful for that," she said.

Walt continues to explain that the project was called The Emily Project because it was named after a young girl who was involved in a farming accident and died as a result of emergency services not getting there in time.

"I can't really comment if it would have changed the circumstances around the situation but it would have changed how the father felt about the situation. He felt very helpless, his wife had to wave down the ambulance to find them," she explained.

Another accomplishment of Walt's includes becoming a member of the OFA's Proud to Lead committee, a staff committee within the OFA that partnered with Farm Credit Canada to give funds to the county federations to encourage leadership.

"Every county in the province has its own federation and a portion of OFA, like when people pay their OFA membership, goes to the county federation," said Walt. "This started before I came to OFA, I would say it started about five years ago or more."

On top of all this, Walt has also been volunteering as a leader in a 4-H club for the past two years now, helping kids through the process of picking their calf and their nutrition regiment.

"We start the club in March, the kids get a calf and show it off on Achievement Day, which we have at the Pickton Fair," said Walt. "So, we take them through the process of picking their calf and we talk about feeding, nutrition and housing. June is dairy month so we made ice cream and we talked about different dairy products and fat content."

Walt is very happy to be working within the world of agriculture and hopes to continue doing it for many years in the future. If there's one piece of advice she wants to leave with people, it's for young people to reach out to their local county federation to get more involved.

"If any young people are reading this who are working in the agriculture industry, I encourage them to seek out their local county federation and get involved," she said. "It's a great way to network, meet people, socialize and also get involved in the agricultural industry and the issues."

Dorchester man wins Auctioneers' Challenge at IPM 2018

CHATHAM-KENT – COMPETITORS PUT THEIR VOCAL TALENTS TO THE TEST DURING THE ANNUAL AUCTIONEERS' CHALLENGE, HELD DURING THE INTERNATIONAL PLOWING MATCH AND

RURAL EXPO (IPM) IN CHATHAM-KENT FROM SEPT. 18 TO 22. THE AUCTIONEERS' CHALLENGE TOOK PLACE ON DAY FOUR, SEPT. 21.

Participants auctioned off four items each, as a tent full

of eager bidders sought to get a deal on a variety of items including IPM 2018 souvenirs, paddles used to mix the Guinness World Record-setting Largest Caesar Cocktail, a greenhouse and more. There were two judges, who looked for clearness of speech, rhythm, catching the eye of bidders, dress code and correctly relaying information about the winning bid to the clerk.

This year's winner is Jonathan Wilson of Dorchester, who received a \$1,000 prize.

Second place went to Elmer Swartzentruber of Warton, with Dave McCormick of Teeswater in third. Nate Kember of Petrolia and Stouffville's Emily Clarkson also competed.



Fast talkers

Auctioneers' Challenge Winner Jonathan Wilson (left) and runner-up Elmer Swartzentruber stopped for a quick photo after the competition. Courtesy photo

HAYBUSTER TUB GRINDER
Grinds big round & square bales of hay and straw

GRINDING OF HAY AND STRAW FOR FEEDING
3" to 5" grinding lengths possible
Improved digestibility
No sorting at feed bunk any more

Shorter mixing times in TMR
Lower fuel consumption for mixing
Less wear on TMR mixer knives

GRINDING OF STRAW AND SOYBEAN STRAW FOR BEDDING
• Improved absorbency • Improved pumpability of manure
• grinding length as short as 3/4" possible

GRINDING OF GRAINS: dry and high moisture corn

Contact Thomas at 613-524-5696 or 613-316-2320
and Paul McRae at 613-362-2485
www.kirchmeiercustomwork.ca

Functional, affordable and very versatile Super Structures that will exceed your expectations!

Fife Agricultural Services Ltd.
14740 County Rd. 43, Finch, ON
613-984-2059 / 1-888-557-FIFE

No safe level of alcohol: I'll drink to that!

by Donald R. Good, P. Ag.
AgriNews Staff Writer

THE URBAN NEWS OUTLETS, BOTH PRINT AND ELECTRONIC, HAVE RECENTLY MADE A BIG ISSUE OUT OF A NEW STUDY PUBLISHED BY THE UNIVERSITY OF WASHINGTON STATE AND FUNDED BY THE BILL AND MELINDA GATES FOUNDATION. THE STUDY WAS PUBLISHED IN THE PRESTIGIOUS LANCET PEER REVIEWED MEDICAL JOURNAL AND THEREFORE CARRIES SOME WEIGHT. THE STUDY INDICATES THAT THERE IS NO SAFE LEVEL FOR THE CONSUMPTION OF ALCOHOL. THE AUTHORS RECOMMEND GOVERNMENTS EVERYWHERE CHANGE PUBLIC POLICY TO IMPLEMENT THE ZERO USE OF ALCOHOL. I THOUGHT WE ALREADY TRIED THAT BACK IN THE ROARING TWENTIES OF THE LAST CENTURY AND THAT SOCIAL EXPERIMENT DID NOT TURN OUT SO GOOD, EXCEPT FOR THOSE WHO GOT RICH BOOTLEGGING BOOZE.

Over the years, I have attended many farm social functions and the sale of beer, wine and spirits is

quite common. Not unusual for the lineups at the bar to be quite long and people really enjoying themselves. I hate to think what damage I did to my body during my two years at the Kemptville Agricultural School, as it was then called, back in the mid sixties.

What should farmers take from this new study?

I downloaded the study from Lancet and reviewed the underlying basis for the study. Back in the early seventies I spent over four years as a pesticide regulator at Agriculture Canada reviewing toxicology data filed in support of pesticide registrations. Based on this prior experience I felt comfortable reviewing the study from a scientific point of view. The first thing to understand is that this study is not original research. No actual studies were carried out by the authors to determine the safe level of alcohol. This is a study that aggregated and reviewed some 694 data sources and 592 previous studies on alcohol related deaths and injuries. This kind of research that is valid however is the selection of which studies to include or

not include in the review will have an impact on the outcome. The study determined that the risk of death and injury related to low levels of alcohol consumption are car accidents and self harm.

The study concentrated on the negative impacts of alcohol use. There are also studies which demonstrate that moderate use of alcohol can be beneficial. There is no doubt that at high levels of consumption alcohol is detrimental to your health and is likely a carcinogen. The liver breaks down alcohol into acetaldehyde, which is a known carcinogen. Nearly everything we

do in life has risk. We drink beer, wine and spirits because we gain pleasure from doing so. That pleasure may include taste or social interactions with family and friends. At what point does the risk become so high that the pleasure is not worth it? With respect to toxins, including alcohol, risk is dose related. The higher the dose, the higher the risk of harm over a general population. We all probably know some elderly people who have consumed substantial alcohol most of their adult lives and are still going strong. At low levels of alcohol consumption the

increased risk of premature death or injury is still very small.

I recently had open heart surgery in Montreal. I was sent home from the hospital with a Cardiac Surgery Information Bulletin. The Bulletin follows the recommendation of the Heart and Stroke Foundation of Canada which is that I should limit my alcohol consumption to one to two drinks per day. A drink is considered one bottle of beer, 5 oz. of wine or 1.5 oz. of spirits. Keep in mind these recommendations are based on averages and some individuals may not be able to tolerate any alcohol. It will be interesting to see if a future version of this Bulletin changes its

recommendation for alcohol consumption to zero as suggested by the authors of the Lancet study. I sincerely hope not. Moving the world population to zero alcohol consumption will never happen. It is preferable the Bulletin acknowledges the reality that most people enjoy a little wine, or a beer, or a sniffer of scotch and continue to recommend a reasonable regime of alcohol consumption. World governments should do likewise.

So, at the next farm social function, you will probably find me in the lineup at the bar purchasing a beer or a glass of wine. Along with my friends, I intend to really enjoy my drink.

Forage Focus 2018 conference and trade show

ONTARIO – THE ONTARIO FORAGE COUNCIL HAS ANNOUNCED THE UPCOMING ANNUAL FORAGE FOCUS CONFERENCE 2018. FOR THE FIRST TIME, THIS CONFERENCE WILL BE HELD IN STRATFORD, AT THE STRATFORD ROTARY COMPLEX ON THURS., DEC. 6.

Forage Focus will be live streamed to a number of remote locations in the eastern and northern parts of the province. Those interest-

ed in hosting a remote location can find details on the OFC website: <http://www.ontarioforagecouncil.com/programs/forage-focus>, or contact Patricia at 877-892-8663.

The program begins with registration and trade show, from 9 to 10 a.m., and speakers until 3:30 p.m. Presentations are CEU accredited. The cost of this year's conference is \$40, and includes conference proceedings and a hot lunch.

The keynote speaker at Forage

Focus 2018 will be Michael Hutjens. Mike retired on Dec 31, 2010 but continues to teach part-time as Professor Emeritus, Department of Animals Sciences at the University of Illinois. Additional speakers will include; Christine O'Reilly and Jake Munroe from OMAFRA, an award-winning forage producer (TBA), and more.

Books of 10 tickets are available to treat customers, or staff. Registration deadline is Nov. 30.

EastGen

Invested in your future.

Agri Inc.



DR. REGISTER NIA-ENERGY GEL

An excellent source for overly fat cows, off-feed cows and to support the appetite. Administer one tube after calving which can be repeated in 12 hour intervals followed by one tube for 2-3 post calving as needed.

www.eastgen.ca



DR. REGISTER CALCIUM BOLUS

An oral supplement providing both fast acting calcium absorption, and slower absorption with calcium sulfate.

Two sources of calcium; calcium sulfate and calcium chloride, make it an effective method of replacing lost calcium at calving.

Ketosis in Canada: Where do you fit?

by Chris Church, DVM, BSc (Agr)
Dairy Technical Consultant, Elanco Animal Health Canada

KETOSIS IS A VERY COMMON DISEASE IN DAIRY CATTLE. AS SUCH, WE TEND TO TALK A LOT ABOUT IT. I HOPE TO ADD A COUPLE OF NEW POINTS TO YOUR UNDERSTANDING WITHOUT REPEATING THE GROUND OTHER AUTHORS HAVE COVERED RECENTLY. FIRSTLY, KETOSIS IS THE RESULT OF A NORMAL PROCESS THAT HAS GOTTEN CARRIED AWAY. WHEN A COW FRESHENS, SHE IS UNABLE TO EAT ENOUGH CALORIES TO MATCH MILK PRODUCTION, SO HER BODY STARTS TO MOBILIZE FAT STORES. SOME OF THAT MOBILIZED FAT, CALLED NON-ESTERIFIED FATTY ACIDS (NEFA) WHEN CIRCULATING IN THE BLOOD, CAN BE TURNED BY THE LIVER INTO A TYPE OF MOLECULE CALLED KETONE BODIES, OR KETONES, FOR SHORT. IF WE MEASURE HER BLOOD, WE CAN FIND THESE KETONES, SUCH AS BETA-HYDROXYBUTYRATE (BHB). IN MODERATION, THIS IS PERFECTLY HEALTHY. LEVELS OF BHB UNDER 1.2 MMOL/L DO NO HARM, AND ARE NORMAL IN HIGH PRODUCING DAIRY COWS. THE PROBLEM ARISES AS THESE LEVELS INCREASE. ABOVE 1.2 MMOL/L, THE COW MAY NOT APPEAR ANY DIFFERENT, BUT THE KETONES WILL (INVISIBLY) START TO CAUSE ISSUES.

We call this subclinical ketosis (SCK). As the levels go higher still, the cow will start to show clinical signs, such as reduced milk production, appetite and manure. This also drives up the risk of other diseases and problems, like displaced abomasum (DA) and ovarian dysfunction.

The latest studies from Cornell put a dollar figure of C\$400 on a case of SCK, but I prefer to use this example: Researchers were investigating the impact of using various timed artificial insemination programs on first conception rate across 6,000 cows (Santos et al., 2010).

During the study, they noticed some cows responded poorly compared to their herdmates. They were able to trace the differences in conception to diseases suffered during transition. Cattle that were healthy post calving had a first conception rate of 51 per cent, whereas those diagnosed with clinical ketosis had 29 per cent. This would have a significant financial impact for any dairy.

Before we go further, it is important to discuss some of the different terms that are used to describe ketosis testing. If you have never tested before and want a baseline on where your herd stands, you can use the Ketoscreen test available from CanWest DHI (or Cétolab from Valacta). These programs test any fresh cows present on test day. This is very inexpensive and requires little work, but it only gives you a “snapshot” of your herd every five to six weeks. Because the duration of an average case of SCK is only about one week, you will not be able to use Ketoscreen or Cétolab to

find every SCK case to treat, but you can track the herd over time.

The proportion of positive cows on a given day is called a prevalence test. If we want to know what is occurring with every cow at the beginning of her lactation or the herd’s, we would have to use a cow-side test more regularly (discussed below). A monitoring program performed one to three times per week that captures all fresh cows will tell us the proportion of cows that have been positive at least once in early lactation; this is called an incidence rate. A rough guide is that your incidence will be 2.4 times higher than what the prevalence rate is for your herd. For example, if your recent Ketoscreen or Cétolab shows your herd has a 25 per cent SCK prevalence, your incidence in the herd would be 60 per cent, which means that six out of 10 cows are affected at least once in early lactation.

Studies and articles may quote SCK rates associated with prevalence or incidence, so it is important to know the difference. Moreover, because the riskiest period for SCK is in the first 15 days in milk, it is important to know the range of DIM used in your risk calculation.

For example, if the prevalence is calculated on all cows at their first DHI test (with cows roughly between five and 40 DIM at first test), cows with lower SCK risk will be included in the calculation and your reported prevalence may then be artificially low.

How are we doing?

Valacta and CanWest DHI have been monitoring the ketone herd prevalence levels across Canada for the last few years. Herds that have a prevalence in the first 21 DIM above 20 per cent are considered high risk for disease. Using that standard, more than 50 per cent of herds tested fall in that category. Results for herds analyzed by Valacta are similar.

How are you doing?

I always believe that prevention is better than treatment, but before we can get to that, you need to know if your herd is struggling with SCK. Having a baseline will also allow you to see if changing other areas actually makes a measurable difference. For the individual cow, testing for SCK is easy and can act as a marker of success or failure of your transition program before you see more costly diseases, such as LDAs. Assuming that we want to pick the best

program available, let’s aim for an incidence test that will find every cow affected. Commercial cow-side tests range in ease of use, price and accuracy.

For accuracy, a blood test is always best. However, for freestalls that do not have headlocks or for those that do not like the idea of collecting blood, the milk strip test (Ketotest from Elanco) can be used in the parlour or tie stall. SCK may affect individual cows at different days in milk, so the best system requires testing fresh cows twice a week. For example, every Monday and Thursday, any cows fresh in the last two weeks would be tested. I know this seems like a big investment, but any positive cows can then be treated before they drop in milk, and hopefully, before future reproduction is impacted. If more than 50 per cent of cows are positive, it then becomes more cost effective to stop testing and just treat all fresh cows with propylene glycol until the root of the problem can be solved.

Besides treating the positive individuals, routine herd testing can help raise the alarm if the transition period goes off track. Often, we do not realize there is an issue until there is a cluster of displaced stomachs. Suddenly finding a high rate of cows with SCK can allow you to call your team (nutritionist and veterinarian) in to troubleshoot before bigger problems arise.

Finally, remember to record the outcomes of your testing. This can be in a computer system such as Dairycomp 305 or DSA/Lac-T, or on paper charts (ask your veterinarian or Elanco representative for examples of paper charts). For those who prefer a mobile option, the iKetone app is available for Apple and Android phones. It was developed by the Ontario Veterinary College and is free of charge.

Ketosis is a costly disease that affects the majority of Canadian herds. Routine testing can help you treat individual cows before they lose milk, and help monitor overall transition success before other diseases tell you there is problem. Talk with your veterinarian about finding a herd screening protocol that fits best for you.




Our Business is Customer Satisfaction
Automatic Doors • Loading Docks
Overhead Garage Doors • Rolling Doors - Partitions
24 Hour Service




info@pivotechdoors.com

Tel. (613) 774-1361 • Fax (613) 774-0689 • 1-800-423-9844
 1700 Cayer Road • Winchester, Ontario • Canada K0C 2K0





**CANADIAN
AGRICULTURAL
PARTNERSHIP**
Innovate. Grow. Prosper.

OSCIA WORKSHOPS

Sign up for free at
ONTARIOOILCROP.ORG

Town	Day 1	Day 2
GROWING YOUR FARM PROFITS (GYFP)		
Identify the steps to reach your farm business goals <ul style="list-style-type: none"> Learn about current farm business management practices and resources Prioritize your farm business goals Develop an action plan to improve your profitability and success 		
ENVIRONMENTAL FARM PLAN WORKSHOP (EFP)		
Improve the sustainability of your farm business <ul style="list-style-type: none"> Identify potential environmental risks Learn about legislation and Best Management Practices Develop an action plan 		
BIOSECURITY WORKSHOP		
Protect your animal and plant health <ul style="list-style-type: none"> Understand the benefits of an on-farm biosecurity program Identify current practices that could be putting your farm at risk Work with a vet or certified crop advisor to enhance biosecurity protocols on your farm 		
GYFP Workshop Schedule		
Casselman (French)	Nov. 13	Nov. 20
Whitby	Nov. 23	Nov. 30
Avonmore	Nov. 28	Dec. 5
Renfrew	Jan. 11	Jan. 18
EFP Workshop Schedule		
Whitby	Oct. 29	Nov. 7
Castleton (Trenton)	Nov. 6	Nov. 13
Almonte	Nov. 20	Nov. 27
Bloomfield	Nov. 21	Nov. 28
Casselman (French)	Nov. 27	Dec. 4
Alexandria	Jan. 8	Jan. 15
Brockville	Jan. 17	Jan. 24
Biosecurity Workshop Schedule		
Casselman (French) Livestock	Dec. 12	10 – 3 pm

Register online at www.ontariosoilcrop.org

Best management practices cited by SNC to counter clear-cutting

by Tom Van Dusen
AgriNews Staff Writer

FINCH – BEST MANAGEMENT PRACTICES HAVE BEEN IDENTIFIED AS THE HIGHEST PRIORITY BY THE FOREST CONSERVATION WORKING GROUP AS A MEANS OF GETTING A GRIP ON DEPLETING FORESTS IN SOUTH NATION CONSERVATION'S 4,300 SQUARE-KM JURISDICTION.

Actions taken in this category are expected to have "the most positive impact" on the future of forest cover, says FCWG's final report submitted recently to SNC. Specific actions recommended included defining and establishing marginal lands for forestry and environmental protection, while reserving prime farm land for that purpose.

As did its predecessor the Agricultural Forest Cover Committee, the FCWG report downplays the big-stick solution of municipal anti-tree cutting bylaws in favour of stronger communication, partnerships, education, outreach, and program enhancements.

Average regional forest cover across SNC's jurisdiction now stands at 28 per cent and dropping, below the 30 per cent

minimum seen as necessary to ensure a healthy natural environment. Main deforestation causes are agricultural, residential and industrial expansion, unsustainable tree harvesting, and alternative energy installations; between 2008 and 2014, some 13,148 acres of forests were lost.

Among areas requiring focus, the AFCC cited best management practices, education and promotion, and stakeholder engagement as priorities. And committee members made it clear they wanted to carry on the work and refine recommendations through representations from multiple stakeholders, giving rise to the FCWG and its subsequent work.

The AFCC recognized that agriculture is a significant land use and economic activity in the jurisdiction, about 60 per cent of which is farmed. In addition to growing crops and raising livestock, the industry supports important services such as market gardens, food hubs, equipment sales and service, feed businesses, and advisory services.

"The AFCC feels there are many actions that can help ensure a strong and

viable future for forest cover in our area while recognizing that agriculture is a vital element of our community."

The committee advocated training, online education and public advertising to help farmers adhere to best practices which would be used to evaluate the use of trees from "cradle to grave", support woodlot assessment, inform on how to productively remove lumber, and provide minimum buffer distances.

One area that got slightly more attention with the FCWG the second time around was the notion that municipalities within the watershed "consider" – not necessarily implement - tree conservation bylaws which they've been reluctant to do out of fear of upsetting constituents.

In bundles of recommendations, the FCWG reinforced AFCC's go-gently stance by promoting increased understanding and appreciation of biodiversity, encouraging municipalities to fund new forest cover initiatives, promoting available tax incentives for maintaining or adding forested properties, and even consideration of a zero per cent tax rate on forested

land. In addition, there should be new forestry education and outreach initiatives, a consolidated webpage with online resources and open source data, increased promotion of land and water recreational activities to heighten public awareness of ecological benefits, and an information package for new politicians to reinforce the value of forest conservation and need for dedicated funding.

As for agricultural best management practices, the FCWG called for emphasizing the benefits of protecting riparian areas and windbreaks, and enhancing SNC's existing tree planting and Woodlot Advisory services.

According to the report, several recommendations are to be acted upon by SNC this fall, including a tree-planting subsidy for riparian buffer and windbreak plantings; evaluation of previous tree planting and buffer demonstration sites; signage and displays for 16 SNC member municipalities promoting forest stewardship resources for landowners; a bilingual community campaign extolling conservation and tree planting; and free tree days.

La Coop
fédérée

Sara Bennett
Grain Merchandiser

Phone: 905-800-1056
Fax: 905-800-1009
Cell: 905-376-5651
Toll-free: 1-844-888-6720

Grower Direct Exports
205 Peter St.
Port Hope, Ontario L1A 3V6
sara.bennett@lacoop.coop
www.lacoop.coop

Sangers Silo

Your Eastern Ontario "Silo Fixer"

Fix Your Deteriorated Silo With Spray "Gunnite Concrete" NOT PLASTER!

613-561-1802
Email: robsangers@me.com
www.sangersilo.com



Barclay Dick & Son
Farm Supply
TOTAL CROP CARE



Crop Consulting and Variable Rate Applications available on request

CUSTOM LIME AND FERTILIZER SALES & SERVICES

Your source for Crystalyx Barrels and Masterfeeds Rough N Ready Creep Feed

Masterfeeds
an Altech company

4139 A-B Hwy 60 Douglas, ON K0J 1S0
613-649-2440 or 613-649-2620
bds@totalcropcare.com

FARM SAFETY!

GET WITH THE PLAN!

Cisterns, silos and other confined spaces on the farm could contain toxic gases. So get with the Plan! Use the **Ontario FarmSafe Plan** to make sure you and your workers have the training and safety gear you need to work safely on the farm.

Download the practical guide for managing safety risks at wsps.ca/farmsafety.

Brought to you by the Dundas County Farm Safety Association, with support from OMAFRA and Workplace Safety and Prevention Services.



DUNDAS COUNTY FARM SAFETY ASSOCIATION
President - Andreas Jampen; Vice-President - Nancy Woeldike; Secretary/Treasurer - Angie Pemberton.

Sevita welcomes guests

by Jeff Moore
AgriNews Staff Writer

INKERMAN — SEVITA INTERNATIONAL OF INKERMAN WELCOMED GUESTS TO THEIR ANNUAL GROWER PLOT DAY ON FRI., AUG. 31. GUESTS WERE TREATED TO A CHICKEN DINNER CATERED BY THE ROASTING MAN SPIT ROASTING AND CATERING OUT OF CORNWALL. THE MEAL WAS FOLLOWED BY A KEYNOTE SPEAKER PRIOR TO BEING DIVIDED INTO FIVE



PROseeds host plot day

Sevita International welcomed about 140 guests to their site just east of Inkerman on Fri., Aug. 31, to show off their new lines of modified soybean trials. The guests were treated to a roasted chicken dinner. Moore photos

SEPARATE GROUPS.
There were five different stations, the first was a discussion on the future of food grade soybeans by PROSeeds, David Guy, Sevita International, Mike Staebler and Matt Renkema. The second station dis-

cussed soybean brands, Genuity and Xtend beans along with seed treatment Fortenza Vibrance Maxx (pesticides) for soybeans by PROSeeds, Matt Ross and Sean Dawe from Syngenta Seedcare.

At the third station they discussed weed control challenges by Cliff Metcalfe, independent agronomy advisor and Adam Bent from Nufarm.

The fourth station presented best management practices for high yielding soybeans by John Van Herk, product development and agronomy advisor for PROSeeds.

The fifth station business manager, PROSeeds, Sandy Hart discussed Enlist soybeans and propriety genetics. The five stations were located on different plots planted with the dif-

ferent varieties offered by PROseeds just east of Inkerman on Guy Road.



Weed control

Proseeds divided the guests into five different groups and they travelled from station to station. Here at station number three, Cliff Metcalfe, Independent Agronomy Advisor and Adam Bent from Nufarm talked about weed control in soybeans.

FOLLOW EASTERN ONTARIO AGRINEWS ON
f FACEBOOK
at www.facebook.com/EasternOntarioAgriNews

GREEN VALLEY HEATING 25 YEARS 1993-2018

Call for dealer in your area.

Office: 1-800-261-0531
Shop: 1-866-415-2127
office@greenvalleyheating.net
www.greenvalleyheating.ca

Distributors of: **LOGSTOR**
Insulated Flexible Pipe

7338 Fallon Dr., Granton, ON N0M 1V0
(GPS: Lucan-Biddulph)

PETER NEILL
Water Management Systems Inc.
Specializing in Agricultural Drainage

OVER 30 YEARS EXPERIENCE

613-623-8802 | Arnprior, Ontario | pneillwms@gozoom.ca

CAMERON
Agri Services Inc.

- Tillage • Planting • Swathing
- Harvesting • Land Maintenance

Clint Cameron

2607 Cty. Rd. #2, Johnstown ON K0E 1T1
C-613-498-4214 • H-613-925-4389
clint.cameron@hotmail.com Farmers Feed...

SONTRAC EQUIPMENT

1490 Dunning Road, Cumberland ON K4C 1P9
613-833-2504 | www.sontraceequipment.com

— Industry Leading —
2 YEARS WARRANTY ON Excavator
0% FINANCING

features

- All wheel steer and articulated wheel loaders available
- Telescopic
- 360 degree cabin view
- Hydraulic attachment
- Easy access maintenance with tilting cab
- Tight turning radius

WACKER NEUSON
all it takes!

AGRICULTURE

TRIPLE "P" CONSULTING -
••• YOUR PARTNER IN PROFIT •••

From An Independent Consulting Company
DAIRY NUTRITION EXPERTISE

TOM PALEN P/F (519) 425-1002
40 years experience 1-800-376-8861
Ruminant Nutritionist tripleconsulting@execulink.com

••• We work for you NOT the feed company! •••

POULTRY BARN WASHING

WE OFFER 4 HOT WATER UNITS
DISINFECTING
FOAMING

D.F. Mobile Wash

SERVING EASTERN ONTARIO SINCE 2000

4559 CARMAN ROAD, BRINSTON, ONTARIO
613-652-1690 / 613-227-8084
Dave Tremblay Owner/Operator

FREESTALL BARN WASHING

FROM 200 TO 500 FOOT BARN
DONE IN A DAY

ALL PRICED PER HR. PLUS TRAVEL

Dr. Henry Ceelen receives award of distinction

KEMPTVILLE – LOCAL VETERINARIAN, DR. HENRY CEELLEN, RECENTLY JOINED A VERY ELITE GROUP OF VETERINARIANS WHEN HE RECEIVED THE 2018 BOVINE PRACTITIONER OF THE YEAR AWARD! THIS AWARD WAS PRESENTED AT THE ANNUAL AMERICAN ASSOCIATION OF BOVINE PRACTITIONERS CONFERENCE IN PHOENIX, ARIZONA. DR. CEELLEN IS ONE OF ONLY SIX CANADIANS TO HAVE RECEIVED THIS PRESTIGIOUS AWARD THAT HAS BEEN PRESENTED ANNUALLY SINCE 1978.

Recipients are selected by a committee that reviews nomination packages consisting of letters from veterinary colleagues and clients, each explaining why that person is worthy of such an honour. This award is presented to bovine veterinarians that have made significant impacts on the lives of his/her bovine clients and colleagues, the dairy or beef industry, as well as the bovine veterinary community. In short, it is awarded to a person that is highly respected by their peers

and clients, and there is no more prestigious and honourable award for a North American bovine veterinarian to receive.

Dr. Ceelen was born and raised on a dairy farm near Hallville. During his formative years, he was an avid 4-H member and participated in multiple 4-H clubs each year. He graduated from the Ontario Veterinary College (OVC) in 1981 and joined the mixed animal

practice of Dr. John Henry in Kemptville. He was one of the first graduates of the Dairy Health Management Certificate Program hosted by OVC. This program revolutionized dairy veterinary practice by emphasizing preventative animal care and production medicine in contrast to a sick animal and emergency care model. In 1985, Dr. Ceelen assumed ownership of the practice and in 2009, amal-

gamated the large animal portion of the practice with that of Prescott Animal Hospital to form Rideau-St. Lawrence Veterinary Services.

Dr. Ceelen is the past president of the Ontario Association of Bovine Practitioners (OABP), a past president of the Central Canada Veterinary Association and a past president of the Canadian Association of Bovine Veterinarians (CABV). He has served on the board of directors of the Ontario

Veterinary Medical Association. He is currently the secretary-treasurer of the CABV, he sits on the executive of the OABP and he is the incoming chair of the National Issues Committee of the Canadian Veterinary Medical Association. He is also still actively involved in veterinary practice at the Rideau-St. Lawrence Veterinary Services and provides invaluable mentorship to veterinary students, new graduates and veterinary staff.



Henry Ceelen

The De Dell difference

DE DELL SEEDS IS A FAMILY-OWNED CANADIAN BUSINESS THAT STARTED IN 1999 WITH A GOAL OF PROVIDING HEALTHY AND SUSTAINABLE ALTERNATIVES TO THE CREEPING CORPORATE CONTROL OF SEED TECHNOLOGY. AS A RESULT, DE DELL SEEDS, WHICH SPECIALIZES IN NON-GMO AND ORGANIC CORN SEED HYBRIDS, HAS REALIZED RAPID GROWTH IN BOTH VOLUME AND GEOGRAPHY SINCE ITS INCEPTION AND HAS GAINED AN EXTENSIVE NETWORK OF DEALERS ACROSS CANADA, THE U.S. NORTHEAST, AND THE MIDWEST.

The business continues to grow their hybrid portfolio as its breeding program develops better characteristics for the North American grower. In the last three years, they have added 14 new high-performing hybrids to their lineup and now have 37 non-GMO hybrids in their upcoming 2019 catalog. Of these 37 hybrids, seven are dedicated silage hybrids offering fantastic feed value, and there are an astounding 10 organic hybrids. This level of alternative choice is unparalleled in the industry!

De Dell Seeds also offers growers a choice of seed treatment. Most of their conventional hybrids are offered as a choice of untreated seed, treated with a fungicide alone, or treated with a combination fungicide and insecticide that is effective, environmentally safer, and steers clear of the use of neonicotinoids. This allows our growers to limit their use of pesticides to what is necessary in the fields that need it.

De Dell Seeds is a business with a conscience, dedicated to providing healthy, high-performing, naturally bred corn hybrids for our environment. See for yourself to see the difference in your yield, herd health, and in the end, your bottom line.



De Dell Seeds is a family-owned Canadian business that started in 1999, and is dedicated to providing healthy, high-performing, conventionally bred corn hybrids for our environment.

De Dell Seeds now has 37 non-gmo hybrids in their upcoming 2019 catalogue. Of these 37 hybrids, 7 are dedicated silage hybrids offering fantastic feed value, and there are an astounding 10 organic hybrids. This level of alternative choice is unparalleled in the industry!

Discover for yourself the difference in yield, herd health, and in the end, **your bottom line.**

De Dell Seeds

The Leaders in Non-GMO Corn



De Dell Seeds • 7095 Century Drive • Melbourne, ON • N0L 1T0
P: 519-264-CORN (2676) • F: 519-264-2672 • info@dedellseeds.com • www.dedellseeds.com



OCPA 2018 Plowing Match results



Worthy of the name

Ottawa-Carleton Queen of the Furrow, Ashley Blondin, of Vars, demonstrates her plowing prowess at the Ottawa-Carleton Plowing Match, Aug. 24 to 25, held at SunTech Greenhouses Ltd. near Manotick. Courtesy photo

OTTAWA – THE OTTAWA CARLETON PLOWMEN'S ASSOCIATION (OCPA) PLOWING MATCH WAS HELD ON AUG., 24 TO 25 AT SUNTECH GREENHOUSES LTD. NEAR MANOTICK.

On Friday, there was a brief opening ceremony followed by a VIP Plowing Competition which was won by Chris Rogers under the expert guidance of Ottawa-Carleton Queen of the Furrow, Ashley Blondin of Vars.

On Sat. 14 plowers using both modern and vintage tractors vied for

titles in the OCPA Plowing Match.

It was a big day for Allen Hills of Ashton who placed top of class in: 2-Furrow Mounted Plow, (open split required; 21 years and over); Best Overall Plowperson; Best Crown; Best Finish; and Highest Scored Land.

Jean-Guy Thivierge of Hammond also enjoyed a good day winning the Antique Tractor, prior to 1945; Highest Score Antique Plowing; and Oldest Plow Person classes.

Making her break-through in the competitive plowing circuit was Avery Dowdall of Lanark County who placed first in the 2-Furrow Mounted Plow (open split required; 16 to 20 years); Youngest

www.agrinews.ca

Girl Plowing, Best Plowed Land 20 years and under; and Best Plowing as a team using same tractor and plow (one plowperson under 20) which Ms. Dowdall shared with her father, Mark Dowdall.

Mark Dowdall of Lanark County showed his expertise in other classes as well winning 2-Furrow Mounted Plow, Amateur (open split not required; 21 years and over); Plowperson who drove the furthest; and sharing top spot with Ron Stinson for Best Open Split.

Other class winners were: Antique Tractor, 1946 to 1960 - Michel Calande, Cumberland; Antique Mounted Plow - Denis Bourbonnais, Sarsfield; and Oldest Plow Tractor - Marven Dillon, Orleans.

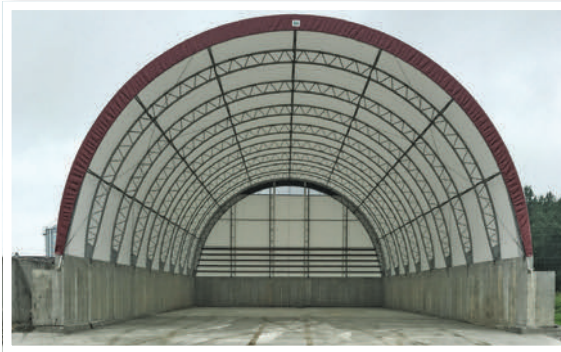
Which one of these profiles would work for you?



60'x200' Concrete Mount



42'x80' Concrete Mount



50'x100' on Concrete Walls



40'x100' Concrete Mount

Call or email today for a quote.



Empire Construction

613.227.0984

info@empirestructures.com

TO VIEW MORE PROFILES, PLEASE GO TO EMPIRESTRUCTURES.COM

Ceresco's continuous improvement

IT HAS BEEN 30 YEARS THAT CERESCO HAS BEEN PLANTING PRODUCTIVE SEEDS IN QUEBEC AND ONTARIO FIELDS AND HARVESTING LOYAL PARTNERSHIPS AROUND THE WORLD. CERESCO HAS SERVED AS THE CROSS ROAD WHERE PREMIUM QUALITY SOYBEANS MEETS THE SELECTING PALATE OF OVER 37 COUNTRIES. AS A NEW CHAPTER ON ITS EVOLUTION, CERESCO HAS LAUNCHED A NEW CORPORATE IMAGE THAT DRAWS A CONNECTING LINE BETWEEN ITS PAST AND ITS FUTURE; A FAITHFUL SYMBOL OF A FERTILE GROUND WORK FROM WHICH TO KEEP GROWING.

Ceresco has specialized in the commercialization of non-GMO and organic soybeans for human consumption. Today, it is known as a leader on identity preserved soybeans while playing a central role in organic and natto varieties' production in Canada.

The company used all its resources, knowledge and drive for innovation to select the best varieties and scrupulous quality control processes to meet the demands of global corporations. Moreover, it provides a first-class service, unique of its kind, to its partners in the field. A team of agricultural specialists pay regular visits to producers to maintain the basis of a long-term collaboration which is vital to Ceresco's identity.

Even if it recently experienced a change of ownership, Ceresco has kept the strong foothold on its origins and values that has made it so unique: its human touch and a deep respect for its producers, its clients and the environment.

Growing Expertise

Ceresco
Growing soybean culture

1.888.427.7692
www.soceresco.com

WESLEY BENTON
General Manager
Manotick, Ontario

MICHAEL FRANKEL
Super Advisor
Lindsay, Ontario



Juniors show their skills at the IPM

CHATHAM-KENT – NORTH DUMFRIES RESIDENTS TOOK THE TOP TWO SPOTS IN THE JUNIOR MATCH COMPETITION DURING THE INTERNATIONAL PLOWING MATCH AND RURAL EXPO (IPM), HELD SEPT. 18 TO 22 IN CHATHAM-KENT.

This year's top-three Junior Match competitors are:

First – Ben Henderson, 20, of Roseville, North Dumfries; second – Austin Brodhaecker, 12, of Ayr, North Dumfries; and third – Matthew

Sterling, 15, of Pain Court, Chatham-Kent.

During the IPM, Henderson – who lives and works on his family's dairy farm in Roseville, just outside of Cambridge, in Waterloo Region – also won the Sidney Sisler Memorial Junior Special (Junior Champion Tractor Plowperson) and was the Class 2 Group 2 champion. Class 2 is for a two-furrow plow. Competitors are then split into groups based on their age.

"It's gone pretty well. I can't complain," commented Henderson of his performance at the IPM. "I've always been an equipment guy."

Henderson, who recently won the Junior Championships at the Canadian Plowing Championships and will participate in next year's World Ploughing Competition, graduated last year with a Diploma in Agriculture from the University of Guelph's Ridgetown Campus. He has been taking part in plowing competitions since 2012.



Champion

IPM Junior Match champion was Ben Henderson for Roseville, North Dumfries.

Courtesy photo

OFA encouraged by changes to predator program

OFA Commentary

by Mark Kunkel, director
Ontario Federation of Agriculture

SOME LONG AWAITED RELIEF IS ON THE WAY FOR ONTARIO LIVESTOCK FARMERS WITH THE PROMISE OF CHANGES COMING TO THE ONTARIO WILDLIFE DAMAGE COMPENSATION PROGRAM (OWDCP). PREDATORS ARE A CONSTANT THREAT TO FARM ANIMALS, AND THE CURRENT PROCESS WAS AN AGGRAVATION FOR ONTARIO FARMERS.

On Sept. 10 the Honourable Ernie Hardeman, Ontario Minister of Agriculture, Food and Rural Affairs (OMAFRA) announced his government's commitment to program improvements in the coming months, in consultation with industry stakeholders. One change that's effective immediately is the Farm Business Registration (FBR) eligibility change. This was a frustrating technicality for claims submissions, and now Ontario farmers who pay their FBR registration by Sept. 1 will remain eligible for claims.

The OFA, along with the Beef Farmers of Ontario (BFO) and Ontario Sheep Farmers (OSF) have been asking for

changes to the OWDCP for a number of years and are encouraged by the announcement. OFA has heard the frustration that members have experienced, and submitted suggested revisions to the Ontario government. OFA, along with BFO and OSF, also participated in OMAFRA-led program evaluation focus groups held in 2018.

Recommendations include expanding the acceptable evidence of damage, including a new OMAFRA extension service for cases in question and shortening the amount of time an investigator must respond to a claim inspection. OFA believes revisions also need to be made to the appeals process, along with the Fair Market Value formula used to determine compensation levels. Farmers are always proactive about predator prevention, and OFA also recommends program funding to implement preventative measures.

OFA is encouraged by the direction of the government's proposed changes to OWDCP, but the final details have yet to be determined. We will continue to work closely with the government as revisions are made and throughout the proposed consultation process. Ontario farmers must be heard throughout this process. OFA encourages members who have concerns or suggestions to improve the program to contact OFA directly.



Runner-up

Austin Brodhaecker of Ayr, North Dumfries placed second overall in the 2018 IPM Junior Match competition.

Courtesy photo

Vanden Bosch Elevators Inc.

2809 County Rd. 7, Chesterville, ON K0C 1H0



Licensed Corn & Soybean Dealers.
We offer Basis Contracts & Forward Contracts.
Competitive drying rates and volume discounts.
Visit www.vbfarms.ca for daily prices.

We will Purchase or Store.

Phone: (613) 448-2359 Fax: (613) 448-1584
E-mail: elevator@vbfarms.ca



Strip-till draws curious crowd to demo day

by Tom Van Dusen
AgriNews Staff Writer

CHESTERVILLE – SO FAR, ONLY A HANDFUL OF EASTERN ONTARIO FARMERS HAVE MOVED OVER TO STRIP-TILL SYSTEMS... BUT THERE'S A LOT OF INTEREST IN THE METHOD AS MANIFESTED DURING THE SUCCESSFUL DUNDAS SOIL AND CROP IMPROVEMENT ASSOCIATION SEEDING AND EQUIPMENT DEMONSTRATION DAY AT THE END OF AUGUST.

Most farmers are still on the fence as they continue

examining strip-till results at demonstration days such as the one organized by DSCIA, said association director Marty Derks who hosted the event.

With 150 farmers and other interested parties on hand, the demo day took place on 800 acres of Derks farmland along Highway 43 between Winchester and Chesterville. Donuts and barbecued sausages kept participants happy between bursts of action out on the field, with the latest in precision planting technology presented by several local equipment dealers.

Derks said he's researching a switch to strip tillage, a cross combining the benefits of conventional with the advantages of no-till. It would be a costly proposition, Derks said, especially for the 16-24 row equipment that he's considering and the extra tractor power needed to pull it. On the other hand, the new equipment – which also spreads fertilizer – would allow him to retire three other machines and get along with three fewer hired hands.

With strip till, tractors operate at a higher speed for maximum impact. After deal-

er Jordan Wallace ran his six-row Dawn Pluribus strip tiller (value \$47,000) across a section of field, farmers were down on their knees, pushing earth divots aside to study the width and depth of the shallow trenches. More than once, they were asked to step back so Wallace could safely make a second pass.

Proponents believe that strip-till warms the soil, fosters an aerobic condition, and creates a better seedbed than no-till. In addition, they claim strip-till allows the soil's nutrients to better adapt to the plants' needs while still giving cover to soil between the rows. In terms of erosion, the amount on a strip-tilled field is light compared to deep conventionally tilled. With a strip-till system, liquid fertilizer can be directly applied in rows where seed is being planted, reducing quantity needed while getting closer to the roots.

Strip-till, its fans contend, can save a farmer time and fuel while reducing soil compaction with passes through a field reduced to two, possibly one, when using a strip-till implement combined with other machinery such as planter, spreader and sprayer. Also, they say, this precision approach can increase overall yields.



Farmers examine the results of the strip tillage demonstrations.

Van Dusen photos



A better option

Jordan Wallace cuts a swath during the strip-till demonstration for the Dundas Soil and Crop Improvement Association Seeding and Equipment Demonstration Day at the end of August.

Making a local choice with OVGP

OTTAWA VALLEY GRAIN PRODUCTS PROUDLY REMAINS A FAMILY-OWNED AND OPERATED BUSINESS IN ITS FOURTH GENERATION, AND CONTINUES TO STONE MILL ALL-NATURAL, HIGH-QUALITY WHOLE GRAIN PRODUCTS RIGHT HERE IN THE OTTAWA VALLEY.

At OVGP, we believe in treating our customers like family. We are committed to feeding our family the most nourishing foods available. It is in this same manner that we take pride in connecting our customers with a local community of growers and producers of the highest quality all-natural products.

More and more consumers are choosing to buy locally and to make more informed decisions about what they are putting on the kitchen table. New 'super-foods' have emerged in the food industry,

with 'super' grains, like barley, experiencing a renaissance in recent years. "The need for hard-working local farmers to meet this growing demand for high-quality whole grain barley is more pressing now than ever," said Kevin Stewart, general manager, OVGP.

OVGP is proud to have contributed to the local economy for 90 years and remains committed to supporting the local agricultural ecosystem by purchasing products directly from farmers in the Ottawa Valley and surrounding area. We are looking to expand our partnerships to work with new and existing farmers who are currently growing or are interested in growing barley.

We would love to hear from interested farmers looking to join forces and help drive this local food movement forward.

CONTACT US ABOUT OUR
BARLEY
GROWING
CONTRACTS

LOCAL IS HOW WE ROLL | BARLEY | WHEAT | CORN

613.839.2802 | OPERATIONS@OVGP.CA | WWW.OTTAWAVALLEYGRAIN.CA

Sun-North
SYSTEMS LTD.

VENTILATION

2.5x BRAND NEW STRONGER BLADE!

with UNBREAKABLE HUB

Air Speeds up to 6 mph!

519-527-2470
sunnorth.com

www.agrinews.ca

30 years and counting

by Kory Glover
AgriNews Staff Writer

CHESTERVILLE – DERKS ELEVATOR CELEBRATED 30 YEARS IN BUSINESS WITH A CUSTOMER APPRECIATION DAY THURS., SEPT. 13, BUT WHAT STARTED THE BUSINESS IN 1988 MIGHT BE A MORE INTERESTING STORY.

“I basically started roasting when Marty was born,” said Gary Derks, president of Derks Elevator. “At the peak, we were running about six days a week, 10 hours a day. But then all the dairy farmers started quitting on us about 15 years ago, but we still had our steady clientele.”

Soon after, Gary put in a small oil press that, unfortunately, did not generate a

lot of revenue to the farm. So, Marty had to look into grants and other means of funds.

“Let me put it this way, this is a very expensive business to get into, very expensive,” said Gary. “We’re still not done. For the next 10 years, the money’s already been spent.”

For the customer appreciation day, Derks Elevator offered 10 per cent off of their next purchase of soymilk and/or roasted soybeans.

“We wanted to show that we appreciate our customers for their years of loyalty,” said Marty. “We have about 100 customers, so we invited all of them here to come out and have a good time.”



Going strong
After working 30 years within the community of Chesterville, Marty (left) and Gary Derks of Derks Elevator threw a customer appreciation day. According to Marty, approximately 100 customers were invited to the event and they will be given 10 per cent off of their next purchase of either roasted soybeans or soybean milk.
Glover photo

CROPLAN, more choices, more insights, more yield potential

CROPLAN® SEED IS BACKED BY THE EXPERTISE AND INSIGHTS TO HELP FARMERS REAP MAXIMUM YIELD POTENTIAL FROM EACH FIELD. BY HANDPICKING SEED FROM THE INDUSTRY’S BEST GENETICS, WE OFFER A BROAD SELECTION OF HYBRIDS AND VARIETIES SPECIFICALLY ADAPTED TO LOCAL CONDITIONS. OUR ELITE GERmplasm IS COMBINED WITH THE LATEST TRAITS AND TECHNOLOGIES TO HELP YOU MEET THE SPECIFIC CHALLENGES IN EACH AREA OF THE FIELD, NO MATTER WHAT CONDITIONS FARMERS FACE.

CROPLAN by WinField United offers a wide portfolio of corn hybrids, soybeans and alfalfa varieties. Every variety is tested in our Answer Plot® program that generates more than six-million data points from nearly 200 locations across North America, and provides predictive insights based on high-quality, locally relevant data. Response-to scores help farmers manage the variability found in every field. This leads to a clearer picture of how to allocate their resources.

From the moment a seed touches the soil, every decision is about managing variables to secure its potential. Some corn hybrids like 3899VT2P/RIB have a high response to nitrogen and population. This means that this hybrid shows a potential yield gain with increasing population and from additional nitrogen inputs. Alternatively, the hybrid 3314VT2P/RIB has a low response to nitrogen score that indicates an acceptable yield potential even in situations where N may be limited.

The CROPLAN portfolio continues to expand. In 2018, five new soybeans varieties, all with Roundup Ready 2 Xtend® technology, were added to the 0.009 to 1.8 maturity groupings. CROPLAN also offers leading alfalfa genetics. HarvXtra® alfalfa modifies lignin content beyond what is possible with conventional breeding and gives farmers the flexibility to maintain current harvest schedules for improved quality or delay harvest for greater yield potential.



By WINFIELD UNITED

A SUCCESSFUL HARVEST STARTS WITH A COMMITTED PARTNER.



© 2018 Winfield Solutions, LLC. Answer Plot®, CROPLAN® and Winfield are registered trademarks of Winfield Solutions, LLC.

Veterinarians Without Borders leaves Maggie Henry wanting to return

by Dianne Pinder-Moss
AgriNews Contributor

LANARK COUNTY – GROWING UP ON A DAIRY FARM OUTSIDE OF CARLETON PLACE, MAGGIE HENRY IS PASSIONATE ABOUT AGRICULTURE, AND COWS IN PARTICULAR.

“I might be slightly biased – I love working with cows,” she stated in a recent telephone interview. “I think cows are great. I like making tiny tweaks to their environment.”

Early this summer, Henry got to share this passion with farmers halfway around the world as she spent three weeks in Kenya through the organization Veterinarians Without Borders (VWB).

Founded in 2005 to facilitate volunteer work by Canadian veterinarians in developing countries throughout the world, VWB’s volunteers have expanded over the years to also include food safety specialists, animal and human nutritionists, community health specialists, community developers, etc.

In her case, Henry completed her undergraduate degree in animal biology at the University of Guelph and is currently pursuing her PhD in epidemiology there. For her doctorate project, she is working with pigs.

“My PhD is looking at if there are any therapeutic effects of the amino acid tryptophan on growing pigs,” she explained. “We are hoping to see positive influences on aggression (such as tail biting) and positive growth impacts as well.”

Henry’s involvement with VWB came through a job posting a friend had sent her

thinking the position was “up my alley.”

“I applied on a whim never thinking I was going to get it,” she related. “I did get it.”

The 32-year-old’s successful application was for the position of farm management advisor in Meru, Kenya.

Kenya is among more than a dozen countries in which VWB has set up projects, which receive support from individual donors, foundations, governments and corporations. In Kenya, for example, Meru Dairy Co-operative Union Ltd. is a local partner of the Healthy Animals and Healthy Communities program in which Henry did her volunteer placement.

Initiated in 2015, the aim of this particular program, according to the PhD student, is to help educate and provide skilled volunteers to assist local producers in the area “so they can help them improve the nutrition of their animals and thus also improve their livelihoods.”

Henry was in Kenya from May 23 to June 21. Two of the weeks overlapped with the placement of Dr. Kelli Pinner, a veterinarian from Lethbridge, AB who was volunteering through VWB as a dairy veterinarian.

Through her work, she and Dr. Pinner travelled to different areas in the Meru region to meet with farmers and, in some cases, visit individual farms.

In comparison to the herd size of Canadian dairy farms, their Kenyan counterparts are “pretty tiny,” according to Henry.

Continued on page 22



Worth the weight

Maggie Henry demonstrates how to use a piece of rope as a weight tape for estimating the weight of the cows. Since weight was typically underestimated by the farmers for de-worming, the VWB team wanted to show them how to get a better idea of the weight of their cows in order to effectively de-worm them.

Courtesy Henry photo

McCorquodale/Innlawn Farms Open House!



120' x 378' Britespan Dairy Barn

Join us for the McCorquodale/Innlawn Farms open house! Stop by and tour this amazing barn, on Friday, October 19. The new barn is equipped with a 3 foot eave, Faromor ventilation, two GEA robotic milkers, robotic feed pusher, alley scrapers, stabling, and more! **Stay tuned for more details!**



1.800.407.5846
www.britespanbuildings.com

Cheff Farm Solutions L'Original, ON	613.487.3555
GIJ Contracting Winchester, ON	613.229.6418
The Razecon Group Napanea, ON	613.561.2406

agricultural | commercial | residential

engineering solutions for your farm business

Whether building a new facility or expanding an existing facility, we can provide professional engineering and design services to suit your needs.

*Established knowledge.
Quality service.*



agricultural | commercial | residential

toll free **1.855.625.8025**
www.stonecrestengineering.com

www.agrinenews.ca

Irish ambassador visits SDG

by Kalynn Sawyer Helmer
AgriNews Staff Writer

CORNWALL – ON FRI., SEPT. 21, SDG, CORNWALL AND AKWESASNE COUNCILS WELCOMED IRISH AMBASSADOR JIM KELLY AND HIS CHIEF OF STAFF MICHAEL HURLEY TO A BREAKFAST MEETING AND TOUR OF THE LOCAL AREA. THE VISIT WAS ORGANIZED PRIMARILY BY ELEANOR MCGRATH AND SHOWCASED THE POTENTIAL FOR GROWTH IN THE REGION BOTH DOMESTICALLY AND INTERNATIONALLY.

The breakfast meeting was held at the Cornwall Golf and Country Club with traditional Irish breakfast options. Before and after the breakfast, the ambassador and local delegates toured the Cornwall Jail, St. Lawrence River, St. Lawrence College and Grant's Dairy Farm.

The farm tour was a first for the ambassador having never before seen a Canadian operation up close. The fairly new barn along Boundary Road features three Lely milking robots that milk 180 cows in a free-stall barn. The farm houses 400 cattle in total with some out for pasture while the others remain indoors. Rod Grant and his son Alex also farm 1,000 acres of cash crop and roughly 200 for feed. Rod told ambassador Kelly the average production for their milking cows is about 40 litres per cow per day.

What was interesting for the ambassador, was seeing the advancements of robotics and technology alongside the large scale featured on many Canadian farms. Kelly drew parallels between the countries, noting that Ireland is moving to larger productions with the help of technology. He continued that while the countries do see some openings from CETA for food products, there may be more opportunities in the business and technology sectors of agriculture.

"We will see Irish agriculture producers take an interest in the cheese quota in particular and there was also interesting in having butter as well, but there wasn't an open for that in CETA. But another area where there is a great deal of interest and a certain amount of activity going on is in the agri-tech side," Kelly said. "We have quite

a big agri-tech sector, machinery and technology, and a number of those companies I believe are active here in Canada. CETA will certainly make it more of a proposition for them in terms of ease of business. A lot of the practical stuff about moving workers back and forth and about the acceptance of qualifications as far as entry on the softer side as well makes it more of a proposition for the companies to look at doing more of their business here. Particularly companies that are very heavily concentrated on the UK market are looking to diversify into other markets and Canada is very compatible in that regard."

Other areas in agriculture open between Canada and Ireland could be in education. Ambassador Kelly spoke to the importance of education exchanges across the board but recognized that in agriculture there were opportunities. "Agribusiness is still really important to the Irish economy and there is a great deal of expertise and experience there. I'm sure there is a great deal that we can learn from each other," said Kelly.

While touring the farm and speaking with Grant, it was interesting for Kelly to get a sense of Canadian agriculture. He explained, due to the publicity of the NAFTA renegotiations, the issue of supply management is something he has followed quite closely. "In some ways they mirror the more historical discussions in Ireland and the European Union about how supplies manage there. There has been a lot of reforms to the common agricultural policy in the European Union and a lot of the surpluses that were problematic in the social sense have been dealt with. It's interesting to observe at a ground level what it means to talk to a Canadian farmer and what changes to the supply management system might mean for the economics of their business. It is a very real issue for people trying to make a living," he explained.

Despite having such a short visit to the region, Kelly looked forward to the growth and future of a relationship between SDG, Cornwall and Akwesasne with Ireland.



Many thanks

Members of council presented Irish ambassador Jim Kelly (second from left) and his chief of staff Michael Hurley (far right) with gifts after the breakfast meeting at Cornwall Golf and Country Club on Sept. 8.

Sawyer Helmer photo



Discussing the issues

Irish ambassador Jim Kelly spoke with Grant's Dairy Farm producer Rod Grant (right) during the farm tour portion of Kelly's official visit to SDG, Cornwall and Akwesasne.

Sawyer Helmer photo

Milk Replacers

"We have been using Maplevew milk replacer for 1.5 years and we love it, our kids love it, and we would recommend it to anyone! It mixes very well and is always consistent.

Maplevew Agri always provides excellent customer service and makes sure their customers are always happy with the products."

Tim & Katie Pelleboer
Dealer: Wallenstein Feed & Supply

For a complete list of our dealers visit our website at www.maplevewagri.ca

- Easy to mix
- Highest quality ingredients
- Optimum digestibility
- For use in computer feeders or hand mixing

Tip of the Month:

Using a calf coat from October to April will help reduce stress on calves.

PRODUIT DU CANADA

Maplevew Agri Ltd. • Phone 519-638-3769
info@maplevewagri.ca

VWB Kenya

Continued from page 20

“The biggest one we saw was around 25 cows,” she related. “Everyone else (we worked with) had two to four cattle.” It is common practice in Kenya to have one cow.

Like Canada, Henry said Holsteins are a popular breed on dairy farms in the Meru region. However, she mentioned that the herds can also include a Friesian mix, Jersey, Guernsey and Dairy Shorthorn cattle.

As part of her work with VWB, during the team’s meetings with farmers, she would make suggestions on nutrition and cow comfort “to help them produce more milk in a day, which would lead to more money for the farm.”

Having perceived Kenya as a country that was “kind of brown and barren,” that misconception was quickly dispelled for Henry.

“It was beautiful,” she asserted. “It was green and lush and gorgeous.”

Aside from the geographic beauty of the country, Henry was also captivated by the beautiful temperament of the people she met.

“Everyone was so incredibly friendly,” she remarked. “So interested in what my life was like here (in Canada) – so welcoming.”

As well, they were “so eager to learn,” she added.

It was exciting for Henry to see the farmers with which she and Dr. Pinner worked, learn new skills, as well as see the progress the Kenyans had made from implementing changes suggested by the

previous year’s VWB team.

“These small changes could make huge impacts, in terms of the cows’ comfort and wellbeing, as well as the farmers’ economic status,” she noted.

Another highlight of working with the farmers in Meru was being able to dispel some myths they held about their farming practices. One long held belief was that a cow eating her afterbirth would lower her milk production.

“We advised the community about possible choking hazards, but let them know that if their cow(s) did ingest the afterbirth, there would not be any detrimental effects on milk production,” she shared.

Outside of her volunteer work, Henry had the opportunity to visit four different safari parks while she was in Kenya. She had day-long excursions to the Ol Pejeta Conservatory, Lake Nakuru National Park and Samburu National Park. She also spent a weekend on safari at Meru National Park, staying at the Rhino River Camp in the rhino sanctuary. Being able to get up close to animals she had only seen in a picture book or at the zoo, like African elephants, water buffalo and lions was an “unbelievable” experience for her.

Of course, the trip was not without its challenges, particularly in regards to infrastructure. A 20-kilometre drive there could take more than an hour, she explained, because the roads were “not well kept.”

As someone who has always prided herself on her punctuality, the poor road conditions in Kenya and a philosophy “that things happen when they happen” required Henry to become more flexible in this regard.

“I learned that patience is a virtue,” she quipped, laughing.



Welcoming new practices

Dr. Kelli Pinner and Maggie Henry are seen de-worming cows during a visit to a farm in Meru, Kenya. De-wormer was something that all the farmers asked about, and it was administered at each farm visited.

Courtesy Henry photo

Depending on how her research is proceeding, Henry hopes to reapply with VWB to return to Kenya again next year at the same time.

“It was really wonderful seeing the changes farmers had implemented from the first group,” she said. “I’d like to see if they’ve taken any of our advice or gone in a different direction and see the benefits of

that as well.”

Henry will be speaking on her Kenya experience with VWB at the Nov. 8 meeting of the Lanark Federation of Agriculture (LFA). All members of the LFA are being invited to attend the meeting, which will take place at the Beckwith Township Council Chambers at Blacks Corners at 7:30 p.m.

PRIDE



AgriShield

SEED TREATMENT SYSTEM FOR SOYBEANS

There are no ‘one size fits all’ solutions when it comes to seed treatments. PRIDE Seeds’ new AgriShield Seed Treatment System provides all the options Canadian farmers need. Whether it’s an industry-leading fungicide, fungicide/insecticide, inoculants or a combination, AgriShield delivers a winning solution. Talk to your PRIDE Seeds dealer for your best option.



PRIDE SEEDS

FOCUSSED ON PERFORMANCE



Cash is king – farms and the risk of insolvency

by Ian Murphy, CPA, CA, partner and business advisor
MNP Cornwall Office

AGRICULTURE PRIMARY GRAIN PRODUCERS ARE SEEING INCREASED LAND VALUATIONS AND STRONG COMMODITY PRICES THAT HAVE CREATED A DECADE OF COMPOUNDING EQUITY THAT HAS LED MANY SMALL ENTERPRISES TO RETURNS NOT USUAL TO THE FARMING INDUSTRY.

However, one factor that has not improved in the past decade is working capital. An industry that has seen a continuous run of strong years of revenue and wealth generation has actually declined when it comes to available cash-flow. The larger growing concern is that while cash has declined, the annual variable and fixed expenses of farm operations has doubled during this time. A benchmark of large farms has identified that only 33 per cent of next year's total expenses will be covered by liquidity, while the remaining balance requires short-term financing. Leverage is becoming a daily discussion in today's primary producer operations.

A farm income statement can be split into three identifiable sections.

Gross margin: This encompasses both the revenue earned from commodity production and sales, as well as the cost of crop inputs and other production expenses. Commodity prices have been strong over the last decade and continue to be above average. Yield factors have also improved as technology in both production and genetics has led to higher yielding commodities. Farm diversification on crop rotation has also led to high revenues for many farm operations. On the other side of the equation, production expenses have also increased significantly. Fertilizer has been increased to achieve the increased yields and additional products in the form of micro-nutrients that are an annual addition to many farms. Chemical has also been increased in the form of numerous passes of fungicide and the additional requirements as weeds become more tolerant. Lastly, with the increase in commodity prices also comes an increase in seed costs to the

primary producer. Overall, production expenses have more than doubled during this time of growth.

Labour, power and machinery expenses: This is the management function of the operation as these costs are the most driven by ownership and the decisions made by the producers. The largest increase to this area is machinery expense. In accountant terms, when cash becomes available to farm operations many producers develop "iron disease". The symptoms include significant increases in capital equipment through multiple equipment trades which then increase depreciation and lease expense on the income statement. The shiny new toy factor has led to the most significant insolvency issue on farms as this not only increases the machinery expenses on the income statement it also requires additional after-tax cash for principal repayments on new financing. Unless a producer has calculated his repairs and maintenance annual costs against the additional new cost of iron, the machinery decision has not been made with full understanding and disclosure.

The other large cost in labour, power and machinery is the labour component. This does not include personal farm drawings but will encompass all third party arm's length wages and custom work. It is not very often that labour is a driving force in the cash-flow issues but when analyzing,

it is often found that less equipment and more labour will increase the profitability of the entity.

Land, building and finance expenses: The costs in this section are a component of the net wealth of the enterprise and therefore have been removed from labour, power and machinery. A young proactive farmer will often have high land rent and large financing costs to expand and grow. Whereas, a farmer at the end of the generation cycle will often own his land and require low financing which reduces the interest cost component. Although this area has increased with the rising cost of land, the expenses here have grown much slower in the last decade than the other costs.

The largest risk to primary producers today is not bankruptcy, it is insolvency. The land wealth generation has made farmers equity rich, but profits and return on equity in the operating corporation (excluding land) have decreased on average. This creates the issue that land equity does not convert to cash-flow unless sold. Many large scale producers are requiring land sales in order to finance future crops.

When analyzing a farm's net worth and financial strengths make sure to cover the working capital ratio and compare working capital to total annual expenses of the corporation. Having a strong net worth does not account for anything when cash is king.

CVO releases new standards

ONTARIO – THE COUNCIL OF THE COLLEGE OF VETERINARIANS OF ONTARIO (CVO) HAS RELEASED FOUR NEW AND REVISED STANDARDS SETTING OUT VETERINARY OBLIGATIONS RELATED TO DRUGS.

"Veterinarians have a unique privilege to prescribe and dispense drugs to animal owners in the province. With that privilege comes the responsibility to do so in accordance with the standards or practice of the profession," said Council president Dr. Steven Jacobs.

The documents, along with accompanying guides which offer suggestions for applying the standards in situations that arise in veterinary practice, cover prescribing, dispensing, extra-label drug use and compounding. The standards outline the expectations to veterinarians and the public.

"Obligations related to the management of drugs are an important area of veterinary medicine which poses inherent risks to animal and public health. Council undertook exten-

sive work, consultation and research in developing these standards over a three-year period," said CVO registrar and CEO Jan Robinson.

The standards reflect new federal rules strengthening veterinary oversight of antimicrobial use, and multiple discussions with stakeholders on the realities of day-to-day veterinary practice. The new and revised standards align with Health Canada's direction that all antimicrobials approved for veterinary use be sold by prescription only.

The standards and guides are available on the College website at www.cvo.org.

As a self-regulated profession, the College's governing Council is comprised of 13 elected veterinarians and five public members, appointed by the provincial government. The role of the College is to govern the practice of veterinary medicine in Ontario.

The College licenses approximately 4,700 veterinarians and accredits over 2,300 facilities in Ontario.



Heritage Club launches Tamworth pig revival

by Tom Van Dusen
AgriNews Staff Writer

RUSSELL – THE HERITAGE LIVESTOCK CLUB OF EASTERN ONTARIO IS HOPING TO REFRESH THE GENE POOL OF THE ENDANGERED TAMWORTH PIG IN THE REGION THROUGH A PROJECT TO ARTIFICIALLY INSEMINATE REGISTERED LOCAL ANIMALS WITH SEMEN IMPORTED FROM THE U.S. AND EUROPE.

Three members of the club, Jeannine Langlois, Doug Easterbrooks, and Yvonne Seeley, all of whom own Tamworths, are taking the lead in the project with Seeley learning how to artificially inseminate.

The club had two young Tamworth's on display at the 160th Russell Fair as part of its annual heritage breeds exhibit. Dedicated to preserving and reviving traditional farm animals, the organization mounts several shows a year with the largest held at Williamstown Fair.

Langlois said the breed is becoming diffused in the region due to inbreeding caused largely by confusion as to the origin of various lines because many aren't registered with the Canadian Livestock Registry Corporation: "Many owners won't go to the trouble and expense."

Diluting through inbreeding results in reduced litters, deformities, and other weaknesses, Langlois said. It's time to strengthen local stock with the infusion of new registered lines.

The breed takes its name from the village of Tamworth in Staffordshire, part of the region of central England where, prior to 1815, dark red grisly pigs foraged in dense oak and beech forests. Described as "long, lean and athletic", the Tamworth is thought to be the most direct descendant of native pig stock of northern Europe.

The Tamworth was standardized during the early to mid-1800s and recognized as a bona fide breed by the Royal Agricultural Society in

1885. It was first imported into North America in 1882, landing in Illinois with several arriving in Canada after 1888, gaining admittance into the Dominion Swine Breeders Association Herd Book in 1893.

Members of the breed were originally expected to find their own food, with impressive snouts making them formidable foragers; their strong legs and sound feet gave them the ability to walk for considerable distances in search of food.

Ginger red coats help the animals adapt to varying climates and protect them from sunburn; their agreeable in disposition

with active intelligence; sows, are prolific, able to produce and care for large litters, and piglets are vigorous with a high rate of survivability.

The mature weight for both sexes is 500-600 pounds. The breed has an excellent carcass yield of up to 70 per cent, and the meat and bacon is lean and fine-grained.

While they continue to forage, domestic Tamworths are fed hay supplemented with oats, barley and other grains, Langlois said. The breed isn't favoured commercially because it can't be easily confined which is essential in a high production pork operation.



Getting a grip

Lindley McPhail and Jeannine Langlois (right) get a grip on a young Tamworth pig.

Van Dusen photo

MANGAN Pure Bred or Grade Holsteins

TEAM FARMS Top Quality Fresh Heifers and Springers

"Will Trade Fresh Heifers for Open Heifers or Cull Cows."

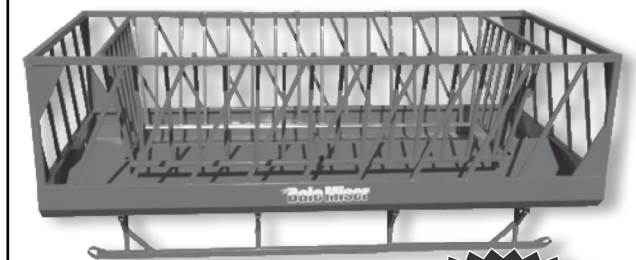


MANGAN TEAM FARMS LIMITED

613-561-2521 Ed Seeley's Bay, ON 613-382-2911 613-561-2881 Tom

CASH & CARRY SALE

Bale Miser 7' x 13'



- Feeds up to 2 - 5' x 5' Round bales, or up to 8' square bales
- 30 Feeding Spaces
- For Cattle • Powder Coated

Sale \$1,920.00
plus tax

W.R.C. STOCK FARM



R.R. #1, Baltimore, ON
1 (905) 342-3119 • FAX (905) 342-3681 • 1 (800) 472-2980
wrcstockfarm@hotmail.com

www.wrcstockfarm.com

Richmond farmer dies in vehicle accident

by Kory Glover
AgriNews Staff Writer

RICHMOND – SOMEONE, SOMEWHERE, GAVE RICHMOND FARMER ANDREW SCHOUTEN ANOTHER CHANCE. UNFORTUNATELY, IT WAS HIS LAST ONE.

On Sun., Sept. 2, at approximately 4 a.m., Schouten died in a vehicle accident, between Corkery and Peter Robinson roads. According to police, he was exiting a vehicle from the passenger side while it was moving.

Schouten was pronounced dead at the scene.

The police added that there was no collision involved and that the incident was being investigated very closely. They called the situation, "a suspicious incident."

Schouten cheated death once before in December of 2013 when he accidentally got his left arm caught in an auger at his family home outside Richmond. He told the story to media outlets, saying that he could feel his boots fill with blood while stuck in the auger, a dozen feet above the ground. However, Schouten was fortunate this time as, not only did some co-workers hear his cries for help, but the volunteer fire department was nearby putting out a bush fire.

The firefighters were soon on the scene with their equipment to cut through chunks of steel to free Schouten's arm.

As a result of the accident, three main nerves were cut in his arm and he underwent surgeries that recovered some down his wrist and a sensation in his hand.

Schouten was able to cheat death once, but, unfortunately, he could not do it again.

TD Canada Trust

Meet our Agriculture Services Team

We know that farming is more than a business – it's a way of life. We are committed to serving Canada's farm communities by providing flexible financial solutions that let you get on with the business of farming.

Contact one of our Agriculture Specialists. We'll take the time necessary to understand your unique needs. Together we can meet today's challenges and anticipate tomorrow's opportunities.



Sylvain Racine
Eastern and Northern Ontario
613-796-1461
sylvain.racine@td.com



Kelly Fawcett-Mathers
Grenville, Dundas, Stormont and Glengarry
613-668-2782
kelly.fawcett.mathers@td.com



Paula Cornish
Peterborough, Northumberland, Hastings and Prince Edward Counties
705-653-4573
paula.cornish@td.com



Jessica Schouten
Carleton, Lanark, Leeds, Grenville, Frontenac and Renfrew Counties
613-229-7943
jessica.schouten@td.com



Banking can be this comfortable



Grow a Leader

SeCan will donate

\$1/unit to 4-H

for SeCan Genuity® Roundup Ready 2 Yield® and Roundup Ready 2 Xtend® soybeans ordered between

OCTOBER 8 – 15, 2018



Contact your SeCan seed retailer.



Mahony R2	2350 HU
Electra R2X <i>NEW</i>	2600 HU
Excursion R2X	2650 HU
Expedition R2X	2700 HU
Altitude R2	2725 HU
OAC Challenger R2	2750 HU
Expo R2X	2750 HU
Absolute RR	2775 HU
Expert R2X <i>NEW</i>	2800 HU
Edge R2X <i>NEW</i>	2850 HU
Excellence R2X <i>NEW</i>	3000 HU
Express R2X	3100 HU
Equinox R2	3150 HU
Executive R2X <i>NEW</i>	3200 HU

* Donation based on final sale.

Genes that fit your farm.®
866-797-7874 secan.com



ALWAYS FOLLOW GRAIN MARKETING AND ALL OTHER STEWARDSHIP PRACTICES AND PESTICIDE LABEL DIRECTIONS. Details of these requirements can be found in the Trait Stewardship Responsibilities Notice to Farmers printed in this publication. Genes that fit your farm® is a registered trademark of SeCan.

Bridging the gap at Breakfast on the Farm

by Tom Van Dusen
AgriNews Staff Writer

NORTH GOWER – CITY FOLKS VISITING A TYPICAL FARM THESE DAYS EXPECTING TO SEE MOM AND POP IN COVERALLS AND BLUE GINGHAM SURROUNDED BY MANURE-STAINED URCHINS MILKING A HANDFUL OF COWS AND CULTIVATING A FEW CROPS ARE GOING TO BE SURPRISED, EVEN SHOCKED, AT THE BIG BUSINESS THAT CONSTITUTES MODERN ONTARIO AGRICULTURE.

Dwight Foster encountered some of those people Sat., Sept. 8 during Breakfast-on-the-Farm, a rotating event organized by Farm and Food Care

Ontario, an agency that likes to describe its role this way: “Cultivates an appreciation for food and farming by connecting farm gates to our dinner plates.”

Fundamentally, it’s all about teaching non-farmers about what’s really going on out on the concessions.

That’s a concept that Dwight and wife Ruth Ann foster and, along with family members were only too happy to lend to the cause their time, talents and massive operation of 3,000-head beef feedlot, elevator, thousands of acres of crops and grain trading business.

“I enjoy the experience of opening the eyes, of bridging the gap between con-

sumers and producers,” Dwight says, explaining he was pleased to welcome more than 2,000 people at North Gower Grains and Foster’s Beef for a free full breakfast – with preregistration – and a tour of the facilities.

The Fosters are the poster-boy brand of farmers who Farm and Food Care want consumers to meet. The couple and their children encompass the fifth and sixth generations of the family to live and farm in what is now rural Ottawa. Always willing to try something new yet compatible with the existing operation, the Fosters have steadily expanded, including with the feedlot which is one-of-a-kind in the area, trucking business, and storage for 100,000 tons of grain.

They’re proponents of agricultural rights and the rural lifestyle without being pushy about it, community supporters, and, as

Dwight has expressed, big believers in befriending consumers.

The gingham and manure-stained urchins might an exaggeration, but Dwight confirms he literally opened eyes when describing to city folk the nature and magnitude of his business, including how each cog is interlinked for maximum efficiency.

Modelled on a Michigan program, somebody came up with the tremendous brainwave for an Ontario Breakfast-on-the-Farm program back in 2013. It was a huge success from the get-go, and 10 editions later, the event has pulled in 20,000 people at various places around the province who, for the most part, would never spend quality time on a farm much less get questions answered by experts from the producers themselves, too veterinarians and nutritionists.

Continued on page 27



Serves up

Breakfast on the Farm volunteers Quintina Cuddihy, Carleton County Junior Farmers; Dave Branson, Branson Family Sugar Bush and wife Wendy Branson, helped serve up a heart breakfast to the visitors of Dwight Foster’s farm and business in North Gower.

Sawyer Helmer photo


Wells & Son

Construction Ltd.

DESIGN & BUILD

Residential & Commercial
Agricultural & Farm Buildings






55 Prospect Rd., Unit 5, Morrisburg
www.wellsandson.com

Tel: **613-543-1055**
Cell: **613-551-2761**
lloyd@wellsconstructs.com



GRANT READY MIX LTD.

SINCE 1957



Concrete & Conveyor
Stone Slinger
Quarry Products
Competitive Prices

CONCRETE DISPATCH
613-932-6798

OFFICE
613-932-6571

TOLL FREE: 1-866-599-8044

244 11 St. W., Cornwall, Ont.
www.grantreadymix.ca

Here's to the FARMER

From all of us at FCC, thanks for making Canadian agriculture so amazing.

#HeresToCdnAg

fcc.ca





Farm Credit Canada
Advancing the business of agriculture




www.agrinenews.ca

Breakfast

Continued from page 26

“It provides a unique opportunity for farmers and non-farming Ontarians to have a conversation about food and farming,” says Farm and Food Care executive director Kelly Daynard. “It gives guests the chance to visit a real working farm and the opportunity to have their questions answered by real farmers.”

In terms of how much trouble it takes to set up, host, and tear down a Breakfast-on-the-Farm doo, Dwight praised Farm and Food Care for having a “well-oiled machine” in place which handled most

of the details including pre-registration. Some 100 volunteers helped out including Perth farmer Barb Keith-Badour and family. Barb worked as a commentator on a bus ferrying visitors between the grain elevator and feedlot, husband Don answered questions in the beef barn and the kids served cider milk.

Full of kudos for the many sponsors who help Farm and Food Care make it all happen, Barb shared Dwight’s sentiment about the value of the exercise: “Being able to teach people about agriculture is my passion. I can hardly wait to do it again.”

Managing 2,000 people

for a breakfast of eggs, sausage, maple syrup, cider and milk was easy due to the permanent space to seat more than 800 inside which Dwight does annually at his Customer Appreciation Day. With everybody pre-registered, the logistics were actually simpler with 500 guests rotated through in batches and then off on tour, he says. Several displays showcased other types of Ontario agriculture.

Farm and Food Care have come up with a magic formula for painlessly educating consumers and, in the process, turning many of them into agricultural advocates.



Eyes wide open

Thousands of non-agricultural visitors made their way through the displays and information areas at Breakfast on the Farm on Sat., Sept. 8. Those who attended learned a lot of farming practices and where their food comes from.

Sawyer Helmer photo



MAITLAND DRAINAGE
613-355-0871

Maitland Drainage



*** Tile Drainage * Ditching * Land Clearing ***

WOLFE Machine built to stay on grade even in our tough conditions

Equipped with Advanced GPS

JIM MAITLAND CELL: 613-355-0871 * HOME: 613-283-4010

Serving the Agricultural Community for over 40 years



Port of Johnstown

A Division of Edwardsburgh/Cardinal Township



- 170,000 Tonne Grain Storage
- GSI 4000 Dryer
- Cleaning – Fumigation – Lab Testing

Call for an appointment:
613-925-4228 x100

3035 County Rd. #2
Johnstown, Ontario K0E 1T1

www.portofjohnstown.com

Follow us on Twitter! @portofjohnstown

IT'S TIME TO GET
SERIOUS
ABOUT YOUR
WHEAT
SERIOUS WHEAT FOR SERIOUS GROWERS



C&M
seeds
THE WHEAT COMPANY

WILKIN

- Great yield, open canopy
- It's short and it stands!
- Long term performance!

EASTON

- #1 Yields over 5 YRS
- Tillers like no other!
- Great fusarium tolerance

FURANO

- Suited for Eastern Ontario
- Tall variety that stands
- Great fusarium tolerance

THE TOP SPRING WHEATS ARE HERE!
SEE WHAT IS BEST FOR YOU

CALL YOUR LOCAL C&M SEEDS DEALER OR CALL US AT **1-888-733-9432**
www.redwheat.com

Top winners at the Renfrew County 4-H Dairy Championship Show



Judge Cameron McGregor presents the Grand Champion Showmanship Award to Kinly Rice of Douglas. Tanner Bromley of Westmeath was Reserve Champion Showperson and Alyssa Vandekemp of Douglas was Honourable Mention.

Courtesy photo



Judge Cameron McGregor congratulates Taylor Nelson of Cobden (right) who showed the Grand Champion 4-H Dairy Heifer. Caileen Bromley of Westmeath (left) showed the Reserve Champion.

Courtesy photo



Autumn McIntyre received the Grand Champion 4-H Beef Showperson award at the Renfrew County 4-H Championship Show from Renfrew Lions member Jesse Belleyard while Judge John Vancise looks on.

Courtesy photo



Sydney Ferguson showed the Grand Champion 4-H Beef Heifer at the Renfrew County 4-H Championship Show. Judge John Vancise presented the trophy.

Courtesy photo

4-H Canada and RBC Future Launch: Supporting career growth for Canadian youth

OTTAWA – 4-H CANADA IS VERY PROUD TO ANNOUNCE A TWO-YEAR PARTNERSHIP WITH THE RBC FUTURE LAUNCH INITIATIVE, WHICH WILL HELP 4-H YOUTH EXPLORE EMPLOYMENT OPPORTUNITIES AND PREPARE FOR THEIR FUTURE CAREERS.

RBC Future Launch is committing \$400,000 over two years to support 4-H programs offered at both the national and provincial levels.

Funding will directly support the 4-H Canada Careers on the Grow program and job-matching board, as well as provincial 4-H career programming across the country. 4-H programs provide hands-on experiential learning opportunities and internships that give youth the practical work

experience, skill-building, and knowledge so highly valued by employers.

“When youth are given the tools they need to succeed, we know they will use those tools to create something we can’t even begin to imagine,” said Shannon Benner, 4-H Canada CEO. “We are very excited about this partnership with RBC Future Launch and deeply value our shared commitment to preparing youth for their future careers. By helping develop critical skills and opening new opportunities for young people, we are making a direct impact on the future leaders of this country.”

“Whether it’s retraining or starting fresh, it’s clear that the skills needed to excel in today’s workplace are changing,”

said Mark Beckles, senior director, youth strategy and innovation, RBC. “That’s what RBC Future Launch is all about, and through our partnership with 4-H Canada, we hope to be able to define those skills—and help young Canadians develop them.”

RBC Future Launch is a 10-year, \$500-million commitment to empowering Canadian youth to build meaningful

careers. With a focus on networking, skills development and experience, the initiative aims to help solve the problems facing young people due to the changing landscape of the workplace.

To learn more about how 4-H Canada and RBC Future Launch are working together to make a positive impact on Canadian youth, visit 4-h-canada.ca.

TILE DRAINAGE CONTRACTORS

Quintan Products Inc.

WINCHESTER, ONTARIO

- Over 40 years experience
- Tile Drainage
- Quality workmanship
- Competitive prices
- Soil erosion control designs
- Open drain excavating
- Site preparations & lagoons
- Fence line & land clearing
- Septic products
- Call for free estimates



Laser-plane & GPS Mapping

613-774-3320

Albert Zandbergen
613-223-8848

Eliminates high heating bills.

Up to **\$2000***
Instant Rebate

The Classic Edge is the perfect combination of performance and value

- Easy to operate and easy to maintain
- EPA-Certified, clean-burning
- Stainless models available, ask about our Titanium Series

Ferme MAIVIEW FARM
E & R Maither
2130 1st Concession, Athelstan, QC J0S 1A0
450-264-6937
450-264-5921 (Bilingual)



CENTRAL BOILER

CLASSIC EDGE™

Outdoor Wood Furnace

CentralBoiler.com
16-3009

*Instant rebate of \$2,000 off of select in-stock Central Boiler outdoor furnace models, available at participating dealers only. Savings shown is on an E-Classic 1450 model. See dealer for details.

www.agrinews.ca

Wheat Pete's outside the box

by Linda Vogel
AgriNews Staff Writer

MAXVILLE – MACEWEN AGRICENTER HOSTED PETER JOHNSON ALSO KNOWN AS “WHEAT PETE” AT THEIR OPEN HOUSE ON SEPT. 14 AT THEIR MAXVILLE LOCATION.

Johnson explained to the attendees why it is important to have wheat in rotation and the valuable nutrients that are provided back to the soil. His advice was to get soybeans in early, even if producers have to go to a lower heat unit bean so that they have the crop off early enough to fertilize and plant the winter wheat. Winter wheat is now a more

sustainable crop. The yields per acre are higher, fusarium is less likely in winter wheat than in spring wheat and they still have the straw to sell. Eastern Ontario has better use of the nitrogen because soil health is so much better than southern Ontario. He warned to not get the southern Ontario disease – soybeans!

A few in the room who have followed Johnson for years agreed with his opinion that science is always changing. What was right at one point may be totally different now. Johnson has been telling farmers for years to never plant wheat following corn. The fusarium is too high, and the crop will be poor. Thanks to

technology, now the suggestion is to plan to get the corn silage off early enough so that producers can go right in and plant the winter wheat. Apply enough fertilizer and give the new seeding enough growth time. Producers do have to ensure there is good drainage in the field but as long as the crop gets to a good height in the fall they will not have to be as concerned about the winter conditions.

Johnson also works with Real Agriculture. They offer a podcast called Wheat Pete's word. It can be found on the website from Real Agriculture. Anyone on Sirius radio has access to channel 147 and can hear agriculture 24

hours a day. Canadian agriculture is broadcast from 4:30-5:30 p.m. five days a week.

Too many of us believe we know the answers. Problem is that if you think you already know the answer what are the chances you will look outside the box. Outside the box often offers interesting results.

Johnson also told farmers to get onto Twitter. Information is received quickly on the platform and he used the example that if crops have army worms producers only have three days to have a solution. Using social media like Twitter and following good agronomists in local areas and other farmers will help spread the information in a timely manner. Twitter is a real agricultural tool.



On the beat

Peter Johnson “Wheat Pete” presented to MacEwen customers at their open house on Sept. 14 in Maxville. Winter Wheat is an important part of keeping healthy soil.

Vogel photo

Let's keep agricultural issues on the municipal election agenda

OFA Commentary

by Larry Davis, director
Ontario Federation of Agriculture

FROM INTERNATIONAL TRADE TALKS TO PROVINCIAL AND FEDERAL GOVERNMENT ISSUES, THE AGRI-FOOD SECTOR FINDS ITSELF IN THE SPOTLIGHT – AND NOT ALWAYS IN A WAY THAT REPRESENTS THE REAL VALUE AND STRENGTH IT BRINGS TO THE ECONOMY. WHEN ONTARIO VOTES FOR MUNICIPAL GOVERNMENT REPRESENTATIVES ON OCT. 22, LET'S MAKE SURE THEY KNOW HOW IMPORTANT THE AGRI-FOOD SECTOR IS TO THE PROSPERITY OF LOCAL MUNICIPALITIES AND RURAL COMMUNITIES ACROSS ONTARIO.

The Ontario Federation of Agriculture (OFA) encourages its members to get involved with the municipal candidates in their region. It's critical that everyone running for public office understands the issues that affect our livelihood and our rural communities. Whoever we elect will

be in a position to impact policies and bylaws that determine the way we operate our farm businesses. So let's make sure they understand what's important to the agri-food sector.

OFA has created a document to outline the key issues for our sector, it's called Agriculture Matters – a guide for municipal councillors and staff and it's posted at ofa.on.ca/GrowAg. It's a detailed package of information on four municipal issues that affect Ontario agriculture – land use planning and economic development, environment and animal welfare, energy, and infrastructure and social services.

The guide is presented in an easy-to-follow format for the four key issue areas – breaking each one down into the component parts and clearly outlining what the issue is, why it matters to farmers, how municipal politicians can help and links to additional resources.

Under land use planning and economic development, we cover issues including zoning bylaws, rural economic develop-

ment, farm property tax and broadband internet. The section on environment and animal welfare includes information on nutrient management, predators, drainage and water. Energy is a key section that covers the need for natural gas and alternative energy opportunities on farm. Under infrastructure and social services, we cover the need for roads and bridges, as well as emergency services, rural child care and rural school closures.

Ontario agriculture is a vital industry in the province. We are an economic powerhouse generating \$13.7-billion in GDP every year in Ontario. And when

you include the food manufacturing sector, we create more than 800,000 jobs for Ontarians. That's more than any other sector in Ontario.

Let's make sure the issues that impact Ontario agriculture, our farm businesses and our rural communities have a strong voice in the Oct. 22 municipal election. Get involved in all-candidates meetings and other events in your area. And make sure all your local candidates know the issues that are important to their constituents, and direct them to OFA's guide for municipal councillors at ofa.on.ca/GrowAg

**WESTEEL WIDE-CORR
MAKE IT
YOUR CHOICE**

High Capacity Storage in a Single or Multiple Bin System

Storage capacities from 1,850 or 51,195 bushels

Heavy duty galvanized corrugated sidewall sheets are bolted in both the crest and valley with high strength plated bolts – no need for upright bin stiffeners. The 44" wide corrugation wall sheet means fewer bolts, fewer wall sheets and faster assembly.

CALL THE AGRI-PRODUCTS DEALER NEAR YOU

<p>CRYSLER G&J Yelle Inc. 613-987-5336 613-987-5554</p>	<p>SEELY'S BAY McCann Farm Automation Ltd. 613-382-7411</p>	<p>VANKLEEK HILL Les Entreprises Remi Bercier Inc. 613-677-0649</p>
--------------------------------------------------------------------------------	--------------------------------------------------------------------------------	----------------------------------------------------------------------------------------

WESTEEL westeel.com

**Licensed grain dealer,
trucking and sales**

- Forward Contracting • Seed Sales • Custom Work • Highway Tractor and End Dump Trailer
- Hauling of Commodities • Long and Short Hauls to Quebec & Ontario
- Sand and Gravel and Topsoil Available • Lawn Seed Sales

**PETERSEN
CUSTOM FARMING**

6475 DALMENY ROAD, OSGOODE, ONTARIO
613.229.0708
ivan.petersen@xplornet.ca | 613.826.3224

PetersenCustomFarming.ca

Lorie Duff returns from Gobi Desert Cup

by Kalynn Sawyer Helmer
AgriNews Staff Writer

MONGOLIA – LORIE DUFF, HORSEMANSHIP TRAINER AND PERFORMER, RETURNED HOME FROM THE GOBI DESERT IN MONGOLIA IN LATE AUGUST AFTER COMPETING IN THE GOBI DESERT CUP ENDURANCE RACE. SELECTED TO REPRESENT CANADA IN THE RACE AGAINST NEARLY 20 OTHER COMPETITORS FROM OTHER COUNTRIES, DUFF TRAVELLED TO THE FOREIGN COUNTRY TO RIDE 480 KILOMETRES TOTAL OVER SIX DAYS.

Going into the race Duff was nervous and excited to test her skills in a new challenge. Not being an endurance racer, she new the race would prove strenuous. “It was life changing for sure and very difficult,” she said. “I was not as prepared as I would have liked to have been. To take on 480 kilometres was doable but it was the hardest thing I’ve ever done in my life.”

Not only did riders have to face the challenge of endurance, but also the desert climate, semi-wild Mongolian horses and the threat of injury. For Duff, her first two days brought nearly insurmountable problems. She told *the AgriNews* on day one, she found herself suffering from dehydration and heat stroke. After recovering in the evening and heading out for day two, she was injured with a partial ligament tear over her right knee cap. Due to the tear she was held from the day three ride, but another rider stepped up to dedicate his 80 kilometres for the day to Duff.

After being patched up enough to continue the ride for the final three days, Duff said it took all of her effort. “I got through and surprised myself. I dug down really deep and found the mental courage to keep going and it was because of everything that I was there for. Which was my daughter, CHEO and all the people that sponsored, donated and helped me get there. That’s what got me through everyday,” she explained.

A big part of the race showcases each rider’s ability to manage and work with the horses. Duff said she went into the competition hoping to finish every day with more horse than



A powerful finish

Lorie Duff represented Canada in the Gobi Desert Cup in August. Despite suffering an injury on the second day, Duff continued and finished the race winning the sportsmanship award. Pictured on the last day is Duff with her horse and the Mongolian herdsman.

Courtesy photo

she started out with and “that was the case in every aspect.” Each horse had different challenges and strengths to offer and Duff said she found great respect for the breed. “The horses themselves are amazing. The herd relationship and the bred is fantastic. I have a huge respect for them, they have very strong hearts and they want to keep going and stay with their herd,” she said.

Before and during the competition Duff worked with CHEO to encourage pledges with all donations going to the hospital. While she did not make her fundraising goal, Duff isn’t done. “Now that I have accomplished the race I’m asking people to now pledge. It is gradually coming up there and people across Canada are donating money.” The pledge link will remain open for as long

as possible and if invited back to the race next year, Duff said she will partner with CHEO again.

Despite the challenges Duff finished strong and made Canada proud. “It was a really big experience for me and nice to know that all the other riders from the other countries, everybody really helped out everybody. That was the biggest success of the race,” Duff said.

HAY FOR SALE
First Cut Bales – 3’ x 8’ or
Second Cut Bales – 3’ x 7’
100 bales each.
Call: 613-679-2951 or 613-679-4844

VKH Vankleek Hill LIVESTOCK Exchange Ltd

CATTLE SALE EVERY MONDAY AND WEDNESDAY
BEEF OWNERS

Those who would like to buy or sell beef animals (stockers, heifers, cows, bulls and cows in calf). Special auction of stockers every last Wednesday of the month starting at 2 p.m.

NEXT SALES ARE
OCTOBER 31ST AND NOVEMBER 28TH
Cows in calf and beef cows will be sold at 7 p.m. All cows and heifers in calf will be verified here by Dr. McLeod to guarantee those sold are pregnant.

TRANSFERRED TO ATQ FOR INSURANCE
Better price with proof of vaccination.
Please register as early as possible.

Located near highway 417 (exit 27)
between Montreal and Ottawa
1239 Ridge Rd., Vankleek Hill ON • 613.678.3008

WINCHESTER GRAIN ELEVATOR
Division of Parrish & Helmbecker Limited
669 St. Lawrence St., Winchester, Ontario

Arthur Rutley
Manager/Grain Purchaser
arutley@pandh.ca
Cell.: 613-913-5786

Tel. 613-774-2720 • 1-866-867-4292

TRP
READY MIX LTD.

CONCRETE PUMPING SERVICE
STONE SLINGER RENTAL

READY MIX CONCRETE

MOOSE CREEK, ONTARIO
OFFICE: 613-538-2271
ST. ALBERT PLANT: 613-987-5377
WINCHESTER PLANT: 613-774-5277
www.trpreadymix.com

Autumn Prestige Sale

OCTOBER 13, 2018 • 6:30 PM
Hoard’s Station • Campbellford, ON

54 HEAD Of top quality breeding stock from 12 leading Ontario breeders

Purebred Charolais

- Bred Cows
- Bred Heifers
- Show Heifer Prospects
- Herdbull Prospects

Sale broadcast on **LiveAuctions.TV**

Catalogue & videos online at **www.bylivestock.com**

For information contact:
Sale chairman: Kirby Hakkesteegt 613.848.6917
Sale Manager: By Livestock 306.536.4261

www.agrinews.ca

Agriculture from four different angles

by Kory Glover
AgriNews Staff Writer

WINCHESTER – LOCAL FARMERS AND GROWERS GATHERED AT WEAGANT FARMS TUES., SEPT. 18 TO EXPLORE DIFFERENT AGRICULTURAL PRACTICES FROM HARVEX, CROPLAN, SYNGENTA, AND PROGRAIN.

“It’s about getting local growers together to listen to agronomic practices from different suppliers,” said Lincoln Tym, Weagant’s seed manager. “We have four suppliers here presenting today, showing off different agricultural practices.”

Prograin district sales manager Marc Saumure, made a presentation explaining the importance of planting non-GMO soybeans.

“So, the idea is to show the farmer that they’re leaving money on the table by not planting non-GMO soy-



Tanguy Lozac’h got down and dirty showing everyone the importance of a trench and how to properly dig one.

Glover photo

beans and the value of that profitability is very important,” he said. “We’re talking about 35 to 40 per cent of the extra margin that is available, that they’re leaving on the table, it is very significant on the overall

profitability for soybean production.”

Steve Hamilton and Danika Arsenault from Syngenta spoke to farmers about new technologies coming to Canada in 2019 including Fortenza and

Cruiser for proper seed treatment.

“Fortenza is going to be another option than having Neonics, such as Cruiser,” said Arsenault. “I think it’s a great option for them and it will control most of the pests



Marc Saumure, a Prograin district sales manager, presented the importance of planting non-GMO soybeans.

Glover photo

in eastern Ontario fields.”

CROPLAN product manager Tanguy Lozac’h, talked about using the right kind of soil with the right project on the right field.

“We have response calls

to help growers position the right breed with the right management, so they could have a good return,” he said. “We’re all about chasing the right bushel, the bushel that will give you productivity.”

Minister MacAulay concludes second Growing Canadian Agriculture tour

OTTAWA – THE AGRICULTURE AND AGRI-FOOD SECTOR IS VITAL TO CANADA’S ECONOMY, PROVIDING HIGH-QUALITY, NUTRITIOUS AND SAFE FOOD FOR CANADIANS AND PEOPLE AROUND THE WORLD AND CREATING GOOD, MIDDLE-CLASS JOBS. CANADA’S AGRICULTURE AND AGRI-FOOD SYSTEM CON-

TRIBUTES OVER \$110-BILLION OF OUR GROSS DOMESTIC PRODUCT, AND LAST YEAR OUR AGRICULTURE, FOOD AND SEAFOOD EXPORTS HIT AN ALL-TIME RECORD OF \$64.6-BILLION. THE GOVERNMENT OF CANADA IS COMMITTED TO ENSURING THE SECTOR REMAINS AN ENGINE OF GROWTH FOR OUR ECONOMY.

In August, the Minister of Agriculture and Agri-Food, Lawrence MacAulay, embarked on the second Growing Canadian Agriculture tour, which concluded on Fri., Sept. 21 in southwestern Ontario. During the tour the Minister travelled to many parts of the country to meet with farmers, processors, and industry leaders, and par-

ticipated in rural agricultural events.

Several strategic federal agricultural investments were highlighted during the tour, which will help keep the sector on the cutting edge. Since the launch of the first tour, Minister MacAulay has announced over \$70-million in new agricultural

Continued on page 35



SERVICE DIRECTORY

<h3>LEGAL</h3>	<h3>FARM TIRES</h3>	<h3>EXCAVATING</h3>
<div style="text-align: center;">  <p>AULT & AULT LAW OFFICES</p> <p>Farm Real Estate, Corporations & Estate Planning Family Law & Agricultural Litigation Employment Law</p> <p>Stephen Ault • Leslie Ault Samantha Berry • Warren Leroy • Mally McGregor</p> <p>522 St. Lawrence Street 89 Tollgate Road West Winchester, ON, K0C 2K0 Cornwall, ON, K6J 5L5 613-774-2670 www.aultlaw.ca 613-933-3535</p> </div>	<div style="text-align: center;">  <p>MOREWOOD TIRE</p> <p>Complete Farm Tire Service Retail & Wholesale Firestone Certified Dealer 613-448-3026 Fax 613-448-3607 Morewood, Ontario</p> </div>	<div style="text-align: center;">  <p>BADGER EXCAVATING LTD.</p> <p>1996-2016 20 YEARS</p> <p>• Asphalt Grading • Backhoe • Dozer • Hy-hoe • Truck Rental • Excavation • Licenced Septic Installation • Pitrun • Sand • Gravel • Top Soil</p> <p>T: 613-448-3915 F: 613-448-2246 badgerexcavating.ca</p> </div>
<h3>TREE NURSERY</h3>	<h3>FARM SUPPLIES</h3>	<h3>HEATING</h3>
<div style="text-align: center;">  <p>FERGUSON Tree Nursery</p> <p>Supplier of Native and Naturalized Non-Invasive Nursery Stock FergusonTreeNursery.ca 613-258-0110 Kemptville, ON</p> </div>	<div style="text-align: center;">  <p>LITTLE IRON HORSE FARM</p> <ul style="list-style-type: none"> • Eastern Ontario's Largest Supplier of Packaged Wood Shaving • Rubber Stall Mats for Cattle & Equestrian • Electric Fencing Supplies • Authorized Distributor of Performance Equestrian Braid • Electric Fencer Energizer Servicing for Most Brands <p>(613) 253-5238 www.littleironhorsefarm.com</p> </div>	<div style="text-align: center;">  <p>GREEN VALLEY HEATING</p> <p>Call for dealer in your area.</p> <p>Office: 1-800-261-0531 Shop: 1-866-415-2127 office@greenvalleyheating.net www.greenvalleyheating.ca</p> <p>7338 Fallon Dr., Granton, ON N0M 1V0 (GPS: Lucan-Biddulph)</p> <div style="float: right; text-align: left;"> <p>USE US ON FACEBOOK</p>  <p>HEATMOR STAINLESS STEEL OUTDOOR FURNACES</p> <p>Distributors of: LOGSTOR Insulated Flexible Pipe</p> </div> </div>



SERVICE DIRECTORY

GRAIN

Bourdon
Feed & Grain Inc.
**GRAIN ELEVATOR
& FEEDMILL**
1-888-342-5795
R.R. #1 18408 Conc. 15, Maxville, Ont.

CONSTRUCTION

Sylvain Cheff construction
General Contractor – Projects Manager
Agricultural building specialist
Forms • Footings • Foundations • Floors
Steel and Wood Structures
BOURGET, ON TEL. 613 487-3555 FAX 613 487-1817

DRAINAGE

IDEAL PIPE
DRAINAGE PRODUCTS
JOHN GUY
REGIONAL SALES MANAGER
OFFICE: 613-774-2662
CELL: 613-558-5925
P.O. BOX 141-691 ST. LAWRENCE ST.
WINCHESTER, ON CANADA K0C 2K0
FAX: 613-774-2664
jguy@idealpipe.ca www.idealpipe.ca

ACCOUNTING

COLLINS BARROW
T 613.774.2854 • W www.collinsbarrow.com
Offering services in the areas of:
Bookkeeping Services
Estate and Succession Planning
Farm Tax Returns
Financial Statement Preparations
Personal and Corporate Tax Returns and Planning

HOOF TRIMMING

DENNIS GILLARD
HOOF TRIMMING SERVICES
13401 HWY. #2 HOME: 613-543-2013
MORRISBURG, ON

CONSTRUCTION

DMC Carpentry
Farm and Home
Renovations/Repairs
or Additions
Darren Chambers
Licensed and Insured
613-448-9061
613-880-0022

FARM SERVICES

RAISTRICK FARM SERVICES
Trucking / Float Service
(613) 242-6949 Denzil G. Raistrick
3887 County Rd. # 7, President
Chesterville, Ont. K0C 1H0 daretransport@aol.com

ELECTRICAL

DEVRIES ELECTRIC INC.
Agricultural • Commercial • Pole Line Construction
Kemptville, ON. 613-258-9691
WWW.DEVRIESELECTRIC.CA

GRAIN

RICHARDSON
Tony Frenza
Négociant en Céréales
Grain Merchant
Phone 450.449.7801
Fax 450.449.7780
Toll Free 800.361.2820
Cellular 514.910.3449
tony.frenza@richardson.ca
Richardson International Limited
1570, rue Ampère, bureau 403, Boucherville, QC, Canada J4B 7L4
www.richardson.ca

FARM EQUIPMENT

HARROWSMITH EQUIPMENT SALES
2106 Bracken Road, Harrowsmith
SPECIAL PRICE
on 48" Net
Wrap
Bale Racks, Gates, Wagons, Feeders, Wood
Chippers and Splitters, Rotary Cutters, etc.
Penning for cattle, sheep and horses.
Tire Repair, Trucking and Welding,
Gravity Boxes
Ph: 613-372-2342
613-583-2342

ELECTRICAL

Electrical Contracting
& Generators
Residential, Commercial, Industrial & Farm
Countryman Electric Limited
WINPOWER WINGO
SOMMERS
Sales, Installations
& Service
2KW - 200 KW
613-448-2474 | 888-388-1117 | www.countrymanelectric.com

HEATING

Everything an outdoor wood
furnace should be.
Revolutionary, EPA-certified, clean-burning
Classic Edge from the leader in outdoor wood
furnaces.
The perfect combination of performance and value
• Easy to operate - FireStar II controller takes guesswork
out of operating
• EPA-Certified, clean-burning
Up to \$500
Instant Rebate
**THE FURNACE
BROKER**
1-613-374-2566
1-888-674-2566
CLASSIC
EDGE
Outdoor Wood Furnace
CENTRALBOILER.COM
16-1001
*Instant rebate savings up to \$500 on select in-stock Central Boiler outdoor furnace
models. Savings shown is on a Classic Edge 750. See dealer for details

FARM EQUIPMENT

Patz CANARM AgSystems **JAY-LOR** **JAMESWAY**
BYERS FARM EQUIPMENT
Stabling and Material Handling Equipment
13505 Byers Rd., R.R. #3, Chesterville
byersfarmeq@bellnet.ca
613-448-2185

REAL ESTATE

Culligan REAL ESTATE LTD. YOUR FARM CONNECTION
Allan Earle, Sales Representative
Culligan Real Estate Limited Brokerage
4856 County Road 6
Brockville, Ontario K6V 5T5
Cell: 613.802.9797 Office: 613.345.3125 Fax: 613.345.4773
allan@culliganrealty.com www.culliganrealty.com



GRAIN

GASSER AG SERVICES
 Spraying • Trucking • GPS
 our "field" is your crop
 Licensed Agricultural Exterminator
 Authorized **Ag Leader Dealer**

TIM VANGILST
 3285 County Road 7
 RR#2
 Chesterville, ON
 K0C 1H0
 TEL: 613-448-1947
 CELL: (613) 223-9159
 FAX: (613) 448-1690
 EMAIL: tim@gasserag.com

TRANSPORTATION

Jack Durant Enterprises Inc.
o/a Jack & Mary Durant
TRUCKING - SERVING ONTARIO & QUEBEC

JACK DURANT
 13055 Kittle Road, R.R. 3, Chesterville, Ontario K0C 1H0
613-448-1206 Fax: 613-448-1880 Cell: 613-794-5562

DENZIL G. RAISTRICK
 613-242-6949 daretransport@aol.com
 Being that we use GPS for directions, we need your municipal as well as postal address.

FUEL

Guy Fuels & Propane

Chris Guy
 President
 12041 Dawley Drive
 P.O. Box 347
 Winchester, Ontario
 K0C 2K0

Winchester 613-774-2655
 Morrisburg 613-543-4397
 Fax 613-774-1465
 chrisguy@guyfuels.com
 Toll Free After Hours
 1-800-667-8132

GRAIN

LRD Legault Seeds LTD.

1614 Route 900 West, St. Albert, ON
Tel. 613-987-5494 • Fax: 613-987-1082
 E-Mail: info@rdlegaultseeds.com

MICRONIZER • SEED SUPPLIER • IP CONTRACTS

CONSTRUCTION

Coleman Construction Ltd.
 Wood and steel agricultural buildings
 Construction de bâtiments agricole en bois ou en acier
613-346-5594
 General Contractor - Project / Construction Manager
 info@colemanltd.ca

BARN PAINTING

JERRY CUMMINGS PAINTING INC.
 Shaun Cummings
 41 YEARS OF QUALITY WORK.
 Walls and roofs of farm, commercial and residential buildings
 Painting Renfrew to Hawksbury, Kingston to Lancaster
613-445-2982 for free estimates
 Russell, Ontario

FARM EQUIPMENT

Les Entreprises Rémi Bercier Inc.
 Yves Lalonde Daniel Levac
 Cell: 613-677-0649 Cell: 613-880-0783

Farm Equipment Sales and Service
 VALMETAL WESTEEL JAMESWAY
 PF3 PRAD
1433 Conc. 6, Vankleek Hill, ON K0B 1R0

MOBILE WASH

D.T. MOBILE WASH

- Freestall Barn Washing
- Poultry Barn Washing
- 4 Hot Water Units

Call Dave Tremblay
613-652-1690
613-227-8084

FARM MACHINERY

Maxville Farm Machinery Ltd.
NEW HOLLAND AGRICULTURE

Rene Auer
 Sales Manager / Directeur des ventes
 Maxville Farm Machinery Ltd.
 2508 Highland Road South
 P.O. Box 217, Maxville, Ontario K0C 1T0
 Tel: 613-527-2834, Fax: 613-527-2703, Toll Free: 1-888-371-0336
 E-mail: maxvillefm@bellnet.ca

HEATING

OTTAWA WOOD PELLET SALES
 Walter, Cheryl & Andrew Bunda

**Harman Pellet Stoves
 Cubex Hardwood Pellets
 Animal Bedding Pellets
 Sales, Parts & Delivery**

www.owps.ca
 8310 Mitch Owens Rd, Edwards ON
613-822-0574

CONSTRUCTION

Wells & Son Construction Limited
 BUTLER Design Builders
 613-551-2761

Wells & Son Equipment & Tool Rentals
 613-543-1055

55 PROSPECT ROAD, UNIT 5
 MORRISBURG, ON K0C 1X0
 email:lloyd@wellsconstructs.com

• RESIDENTIAL • COMMERCIAL • FARM BUILDINGS

HEATING

Multi Choice Boilers Solar / Wood ORLAN / LIEPSNELE CANADA THE ALTERNATIVE WAY

OUTDOOR EUROPEAN WOODBURNING BOILERS
 Nearly Smokeless Revolutionary Candle Gasification System
 BURN TIME: Solid Wood - 10/16 Hrs.; Wood Chips/Sawdust - 6/8 Hrs.;
 Coal - 2/3 Days. **EFFICIENCY 92-93%**

Exclusive Liepsnele Distributor
1.877.538.3018 or 514.714.8980
 ken_herm@sympatico.ca | www.orlancanada.com

CONTRACTOR

Merkley Energy Solutions
 Serving the area since 1986

- Spray Polyurethane Foam 1/2 and 2 lb Foam
- Complete Insulation service
- Fiberglass Blown insulation
- Batt Insulation & Vapour Barrier

613-652-2191
 www.MerkleyEnergySolutions.ca
 1-888-440-3349
 Fax: 613-652-1251
 8 Bouck Road, Iroquois, ON K0E 1K0

member of **CUFCA**

BOBCAT

Bobcat of Ottawa Valley
 SALES • SERVICE • PARTS • RENTAL

www.bobcatov.com

Casselman 2 Castonguay 1.877.244.5593
Ottawa 132 Reis 613-831-5166
Cornwall 2935 Copeland 1.877.840.4182

ELECTRICAL

Advertise Your Business to over 13,000 farms in 15 counties in Eastern Ontario

ONLY \$23⁰⁰ PER MONTH

KEVIN BARKER AUCTIONS LTD.

"AUCTIONS WITH ACTION"

AUCTION SALE

SURPLUS SALE FOR THE TOWN OF MIDLAND!

SATURDAY, OCTOBER 13TH - 10 A.M.

731 Ontario St., Midland, ON

Vehicles, Vessels and Equipment includes a 1993 Limestone Police boat Hull: ZBM22009G393 with inboard/outboard Merc engine S/N VBM22009G393, plus 20 hp Merc motor, 1994 EZ loader aluminum tandem boat trailer VIN: 1ZE1SL224RA0031800, 2010 Toyota Highlander Hybrid, white, 4 door, 223,900 kms., VIN: JTEEW41A582005015, 2013 Ford AWD flex fuel 4 door Police cruiser, needs transmission repairs, VIN: 1FAHP2M80DG1084226, 2008 Pontiac Wave, white 4 door sedan, VIN: KL2TD66698B075315, 1991 Snow Master Detroit diesel engine, SMI Model 520A HD S/N 4D0225815 with front mount commercial double auger snow blower with Detroit diesel engines Model BI-90 S/N 75403, (transmission needs repaired), JCB 8' material bucket, snow blower sidewalk machine attachment, 2009 International (Midland Transit bus, runs, sold 'as is') VIN: 4DRASSKM39E683571, Alamo 7' Mott flail mower (as is), Mott mower, 4 - Lawn-Boy push mowers ('as is'), Viking-Cives 12' wing plow blade, Honda EM1800 portable gas generator, small Kohler portable gas generator, compressor ('as is'), sweeper attachment, 1980 Humber Surf boat with Evinrude motor (sold as is) S/N: DOT11270 (9920), 2004 GMC Sierra, 138,000 kms., VIN: 1GTEC14V04E136808, & yard use sign trailer. **Forensic Laboratory Equipment - Sold as One Lot** includes, an Air Clean 4000 Dry Safe work station, CyanoSafe fuming chamber, finger print dusting unit, photo processing equipment, forensic lighting sources, plus cabinets with various supplies; i.e. 3 tri-pods, etc. **Miscellaneous Items** include a Coca-Cola upright dispensing cooler (as is), Zetron dispatch radio console and control box, bullet proof vests, video & surveillance cameras, paper shredders, lighting equipment, light standards, used duty belts, Intoxilyzer machine, lap tops, printers, monitor, screens, hard drives, office furniture, filing cabinets, chairs, snowmobile and cyclist helmets, gym and training mats, interlocking stone/brick, tool box for a pick up, large collection of Midland aluminum street signs, industrial steel shelving, plus much more!

VIEWING FRIDAY, OCTOBER 12, 2018 FROM 9 A.M. - 4 P.M., & SALE DAY FROM 8 A.M.!

Note: Lab Equipment viewing prior to sale day by appointment only!

Please contact: Jim by email at jreichheld@midland.ca

LOADING DAY OF SALE, AFTER THAT BY APPOINTMENT ONLY AND YOU MUST PRE-ARRANGE WITHIN ONE WEEK OF SALE DATE!

Some items will be auctioned Online sale day start time TBA! For more info visit our web site!

PLAN TO ATTEND!

Terms: Pay in full sale day! Cash, Cheque with I.D., Visa, Master Card!

Note: No Debit/Interac available today!

AUCTION SALE

SATURDAY, OCTOBER 27TH - 10 A.M.

The property of **THE SIMPSON'S**

Cannington, ON
DETAILS TO FOLLOW!

NOW BOOKING 2019!

FARM AUCTION

of well maintained farm machinery & equipment, tools & miscellaneous items!

SATURDAY, OCTOBER 20TH - 10 A.M.

The property of **JIM SEYMOUR**

1688 Stewart Line, Cavan, ON

From Fowler's Corner take Hwy. 7 south 9kms. then west. Sale is located just west of Peterborough bypass on Stewart Line. See Signs!

Sale includes a CIH 5240 air conditioned cab tractor 4 wheel drive, 16/16 transmission, power reverser, 4 speed power shift 540/1000 pto, S/N JF1040556, 4,376 original hours, IH 624 tractor with backhoe attachment, tractor has forward/reverse shuttle trans, neat and tidy, IH Super H Tractor with 4 wheel rake, tractor in original condition S/N 7502J, NH 195 manure spreader 1000 pto, tandem axle, hydraulic end gate, top beater, poly floor, with added hydraulic chain speed control, Ezee On 10' offset disc mdl 1250 loaded beams hydraulic lift on dual tires also has hydraulic scraper kit S/N 43127, Krause 16' rock flex disc with buster bar harrows, mdl 220.5, trailing with hydraulic lift S/N 28015, IH Vibra Shank 4500 trailing cultivator with coil tine harrows, (20' hydraulic folding wings, hydraulic lift cylinder, like new), Rock-O-Matic 6' stone picker pto drive with slip clutch, hydraulic dump, Case IH 5100 Soya Bean Special 21 run seed drill, double disk opener soya bean depth press wheels, hydraulic lift, grass seeder, marker tires hitch for packer, tire track eliminator kit, like new, Turnco 13' packer, 18' folding roller hydraulic fold and lift, JD 7000 6 row corn planter, dry fertilizer, monitor, finger pickup, & markers, Forano fertilizer spreader 3 pth 540 pto tube broadcaster, for small grass seeds, Hardi 300 gallon Trail Sprayer 42' boom, hydraulic lift on boom Diaphragm 540 pto pump electric boom controls, foam marker kit, IH 201 10' swather with conditioner, working order S/N H-6466K, NH 320 square baler with hay basket hitch, 2 - bale baskets, 2-20' hay wagons, hay wagon with John Deere 1065A running gear with round bale bars, trailing hay fluffer custom made from a side delivery rake, Bush Hog rotary mower Squealer Series 6' mower, slip clutch, 3pth mounted, custom made Dump Trailer with hydraulic folding market auger power up and power down on dump 12' x 8 1/2' tarp kit, Butler Bin 5000 bushel air floor with stir system, Westfield 51' x 7" 540 pto auger, Bruns 350 bushel gravity grain wagon, Horst mdl 205 running gear, truck tires, tarp kit road light kit, Killbros mdl 385 gravity grain wagon Horst mdl 200 running gear and tarp kit, Market 26' transport auger, 2 - Silos 20' x 60', 1 - Patz silo unloader with 5 hp HD drive motor (Note: Buyer is solely responsible to remove silos and silo unloader), Agri Metal stationary roller mix mill, IH forage blower mdl 56 540 pto auger feed on blower, custom made fork lift unit base is made from a 201 IH swather to power a fork lift mast, unit has pallet forks and accepts Alo quick attach attachments, stone fork with hydraulic grapple Alo loader mount, 10' loader mount blade Alo quick attach manual angle, Walco/Meteor 85' snow blower single auger hydraulic chute 540 pto, Cable Plow homemade, with cable guide tube great for tree roots 3 pth mounted, cattle squeeze with auto locking gate, Clipper seed cleaner with seed treatment and bagger kit, John Deere 3 pth 8' blade manual angle, 250 gallon water tank, bale spear loader mount IH 2250, Woods/Jinma mower 50" mid mount 3 blade mower for compact tractor 540 pto, JD 4 row planter frame, Johnston Phantom snow mobile all original, rotary engine, electric start, stored inside, plus spare parts, OMC rotary engine new in original box, single cylinder a rare find, hydraulic power pack Honda mdl 390 engine, tires and rims, 12.4x42 tires step up rims, plus many more items too numerous to mention!

Some items will be auctioned Online sale day start time TBA! To register visit our web site!

PLAN TO ATTEND!

Terms: Pay in full day of sale! Cash, Cheque with I.D., Visa, MasterCard & Interac!

VENDOR: JIM SEYMOUR FOR MORE INFORMATION CALL RICK WEIHER 705-879-0150

FARM SOLD AUCTION SALE

farm machinery & equipment, Case 1150B diesel crawler loader, Int 500E compact crawler, shop equipment & tools plus a large assortment of misc. & collectible items!

SATURDAY, NOVEMBER 10TH - 10 A.M.

The property of **FRANK SR., FRANK JR. & MARION WEINHOLD**

C525 Durham Regional Rd. 12, Pefferlaw, ON

From Cannington go west of Hwy. 12 or from Wilfrid go east. See signs!

Sale includes a Case 1150 B diesel crawler loader & an Int 500E compact crawler! **Shop Equipment & Tools** include a Northfield 1550 industrial band saw, General industrial table saw, Eutec AC/CD inverter arc welder unit, 500 amp welder, old army generator (as is), old #1084 Goldie & McCulloch pto driven wood planer, old Lahartl multipurpose Ironwork horse unit, large industrial air compressor, small air compressor, very large variety of new & used shop tools & machines, manual tire changer, manual metal shear, metal shelving, large selection of electric motors, assorted steel, channel, flat, etc., large selection of scrap metal & a hydro power booster box. **Farm Machinery & Equipment** includes a MF 35 diesel tractor plus tiller & mower attachments, Fordson Dexter diesel tractor with front end loader, Farmall Super 'A' gas tractor, Ford lawn tractors 'as is', 2 row corn planter on steel, 2 & 3 furrow drag plows on steel, 2, 3 & 4 furrow 3 pth plows, 8 hp rear tyne garden tiller, older potatoe planters & diggers, pull type & 3 pth cultivators, single horse scufflers, various sets of small discs, 10' chain harrows, 3 pth 6' finishing mower, hydraulic dual wheeled dump trailer, 2500 gal poly tank 'V' style snow blower, pull cone fertilizer spreader, MF pto driven manure spreader, one good one for parts, 1/3 yard portable pto driven cement mixer, various hay & grain elevators & augers, hay tedder & rakes, flat hay wagon, portable wood splitter, seasoned dried firewood, small stock steel penning, various single axle trailers & frames, light wagon running gear, old dump rake on steel, Ebersol belt driven grinder, fanning mills & a turnip planter. **Miscellaneous Items** include a 10' aluminum fishing boat, Sports Pal 14' aluminum canoe, small fish hut, 16' set of steel steps, 1998 Dodge 4x4 standard pick up 'as is', steel paint spray booth, many older model chain saws, old Rupp bike, Roadster mini bike, old Hus-Ski snow machine, Haig large antique cash register, old counter top scales, vintage Coca Cola chest cooler, horned anvil, large assortment of steel wheels, old earth scoop, old model 'A' & 'T' parts, wooden wheeled flat wagon, antique upright & platform scales, Oliver combine motor, endless drive belts, old doors, 8' x 36' trailer on wheels, various storage boxes, rolls & sheets of steel & aluminum, cedar rails, steel water tanks, HD Hobart meat grinder, meat band saw, electric meat slicers, wine cider press, old lanterns & bottles, modern Smooth Stride exercise machine, plus much more!

Some items will be auctioned Online sale day start time TBA! To register visit our web site!

PLAN TO ATTEND!

Terms: Pay in full day of sale! Cash, Cheque with I.D., Visa, MC & Debit!

Note: 2 Auctioneers selling today!

VENDOR: FRANK WEINHOLD SR. 705-437-2935

To bid in our Online Auction sales you must register & be approved to bid for EACH of our Online Auction sales, no later than noon the day prior to sale day! To register visit our web site!

Terms: Payment in full day of sale. Cash, Cheque with I.D., Visa, MasterCard & Interac/Debit when available!

Owner(s), Auctioneer & Staff are not responsible for any injury, accident or any loss in connection with the Auction Sale. All verbal announcements take precedence over any prior print advertising! Respectfully no pets allowed!

Sale Managed & Sold by:

Kevin Barker Auctions Ltd.

T: 705-328-1478

Web: www.kevinbarkerauctions.com

C: 705-878-2947

LUNCH AVAILABLE NO BUYERS' PREMIUM! NO RESERVE

www.agrinews.ca

North Dundas Building Supplies open for business

by Jeff Moore
AgriNews Staff Writer

MAPLE RIDGE—NORTH DUNDAS BUILDING SUPPLIES OFFICIALLY OPENED THEIR DOORS FOR BUSINESS ON SAT., SEPT. 8, AND WELCOMED NEW CLIENTS, FAMILY AND FRIENDS AS WELL AS THE GENERAL PUBLIC. THERE WAS A BARBECUE, THERE WERE INFLATABLES FOR THE KIDS, SALES AND DRAWS FOR PEOPLE TO GET IN ON.

Members of their new staff were on hand to meet and greet potential customers and clients. The owners, Stacy Duguay and David Nyentap, were all smiles with the attendance they received and they made people feel comfortable.

The company is mainly run as an agricultural construction business with their main focus on the dairy industry. Nyentap has been in the construction business for over 20 years so his experience is definitely an asset.

Duguay's background is in marketing and she will be mainly focusing on the administration aspects of the business. Duguay has been in administration for over 10 years and the pair had been running their lumber yard independently for the last year and a half and

decided to expand into the retail side of the business so they joined the Castle brand.

The pair had been working since May to get the store together and bring in materials and merchandise.

Duguay thanked families and friends, "we could not thank our families and friends for their help with projects at the store, watching our kids and dealing with our late hours and theirs." She continued, "the staff has been so great getting the store set up and taking on tasks to ensure everything was completed on time. It was so heart warming to see so many people come out and check out the store at our open house. We are excited to serve the community with their building supply needs!"



Grand opening

The staff of the newest business in North Dundas welcomed guests to their Grand Opening on Sat., Sept. 8. The North Dundas Building Supplies officially opened for business with a meet and greet at their location on Hwy 43 just west of the North Dundas District High School between Chesterville and Winchester. The staff posed for a picture in between greeting people. The staff members are: front from left, Craig Beckstead and Brody Collins. Back from left, Noah Simzer, Jacob Sinclair, Jordan Quaile, co-owner, Stacy Duguay, co-owner, David Nyentap, Grace Cave and Amanda Coutlee. Absent from photo were Sam Findlay and Neil Crossley.

Moore photo

Growing Canadian Agriculture tour

Continued from page 31

research clusters under the Canadian Agricultural Partnership to key areas of the sector, including organic, canola, pulse, agronomy, beef, pork and grape and wine.

During the second part of the tour, Minister MacAulay also announced the details of the Government of Canada's \$70-million investment to address significant environmental challenges and hire approximately 75 scientists and science professionals in emerging fields of agricultural science. Other key investments to support growth and innovation in the dairy, livestock and hemp sectors, as well

as securing of market access for British Columbia fresh cherries to Japan were announced.

Together, these investments and activities will help build an even stronger and more innovative sector for Canada.

"Our Government is proud to support the Canadian farmers and food processors across the country who work hard every day to put safe, high-quality food on our tables, while driving our economy and creating good, middle-class jobs. It was a pleasure to talk with so many producers and processors on my tour this summer and see their dedication and commitment to securing Canada's position as a top global agricultural producer. I would like to thank them on behalf of all Canadians – together, let's keep Growing Canadian Agriculture," said MacAulay.

DIAMANT

The best chopping corn head for your combine's needs!

HEADERS AVAILABLE IN STOCK.
Call your local dealer!

- Weagant Farm Supplies
- Reis Equipment Centres
- Green Tech • Agritex
- Les Équipements Adrien Phaneuf Inc.
- Machineries C&H

ADJM AGRI-DISTRIBUTION **1 514-817-9731 • www.adjm.ca**
 370 Road 205, Hemmingford, QC J0L 1H0

GREENFIELD
GLOBAL

Attention Producers!
We want your quality Ontario-grown corn!

Greenfield Global has reopened its Farm Direct Program for the Johnstown and Chatham, Ontario facilities.

- Call today to sell your corn direct
- Make online offers from our website
- Contract direct – electronic payments
- Schedule direct – electronic scheduling

It's easy!
Go online today at www.greenfield.com to see our bids and make an offer.

JOHNSTOWN

- Call Joanne at : 613-925-1385 X 7723
- joanne.vanmoorsel@greenfield.com
- Call Ryan at: 888-471-3661 X 8378
- ryan.stirling@greenfield.com

CHATHAM

- Call Melody at : 888-471-3661 X 7423
- melody.hambleton@greenfield.com

Stormont Queen shines at 2018 IPM

by Kalynn Sawyer Helmer
AgriNews Staff Writer

STORMONT – KAYLA MANLEY, STORMONT QUEEN OF THE FURROW WAS ONE OF 25 WOMEN TO COMPETE THIS YEAR AT THE ONTARIO QUEEN OF THE FURROW COMPETITION AT THE 2018 IPM IN CHATHAM-KENT. MANLEY REPRESENTED STORMONT WITH GREAT PRIDE AND PLACED AS SECOND RUNNER-UP IN THE STANDINGS.

After returning home from her IPM adventure, Manley explained that the competition is judged in four categories: plowing ability, appearance and deportment, an interview with the judges and a prepared speech on agriculture. After the points in the four categories are calculated, the top five finalists are required to give an impromptu speech at the final banquet to determine the winner. This aspect can be extremely challenging as the topic is unknown to the contestants. Manley explained, having a well rounded and current knowledge of agriculture's major issues is important to succeed.

Manley noted throughout the process one of her favourite parts was listening to the prepared speeches. "Each of the women had something different to say," she related. "I found my passion last year in speaking out about mental health in agriculture and this year, I spoke about my experience with 4-H."

During her speech Manley recalled a powerful moment when she requested that all 4-H alumni and members stand to say the pledge. "Nearly every single person in that crowd stood and recited with me. To be connected to that many people all at once, just for a moment, nearly took my breath away. I was glad that it was the end of my speech because I was about to cry, it was so overwhelming."

Helping Manley get to this point in her Queen of the Furrow regime was Alyssa Waldroff. Past Stormont Queen of the Furrow and president of the Stormont Plowmen's Association. "She gave me my crown two years ago. When she did so, she told me that I could ask her anything and she would be there

for me," said Manley. "She has been so much more than a president to me. She was a really dedicated mentor and I cannot thank her enough for all that she has done."

Representing Stormont at the IPM was an honour for Manley and she credits the county for her success. "The support I received, the guidance, the learning experience...the last two years have helped me grow more than I think I can ever really express. I was surrounded by smart, strong, capable women at the IPM so I have no idea how the judges were able to narrow it down. To have been called as the second runner-up was unexpected but I am truly proud to have gotten that far," she explained. "I am so blessed to have been able to represent a county as wonderful as Stormont."



County pride

Stormont Princess of the Furrow Haleigh-Jo Teplate and Stormont Queen of the Furrow Kayla Manley (right) represented their county in Chatham-Kent for the 2018 IPM in September. Manley was awarded as second runner-up in a competition of 25 women.

Courtesy photos



On the field

Kayla Manley had time to enjoy the sights at the IPM while visiting Chatham-Kent for the Queen of the Furrow competition.

Whitewater Metals Inc.



Buy Factory Direct

- Manufacturer of metal roofing, siding, trim
- Agricultural, commercial, residential
- 18 colours with 40-Year paint, and galvanized, galvalume
- Trim, screws, soffit, ridge vent, etc. in stock
- Delivery available throughout Eastern Ontario

CALL FOR A QUICK QUOTE!

18391 Highway 17, Cobden, ON K0J 1K0

613-646-2222

fx 1.800.661.0688 sales@wwmetals.com

www.wwmetals.com

Neal's Heating, Cooling & Refrigeration Ltd. Rheem

RESIDENTIAL • COMMERCIAL • AGRICULTURAL

Natural Gas, Propane & Electric Heating, Refrigeration
Air Conditioning/Geo Thermal Heat Pumps, Bulk Tanks, Sheet Metal
24-HOUR SERVICE, FREE ESTIMATES

Neal Bartholomew

12095 Baker Rd.
Winchester, Ont.

Tel.: 613-774-6446
Fax: 613-774-6486

nealshcr@xplornet.com

H&I Country Supply Ltd.

FEED, SEED, FARM SUPPLIES,
HARDWARE AND MORE!



PRIDE SEEDS



PROSeeds SeCan
SEVITA INTERNATIONAL

FOR SEED SALE & SERVICE CONTACT:

Albert Harbers

613-802-4465

4129 Brinston Road, Brinston, ON

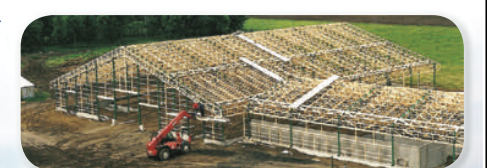
613-652-4828

Harry & Greg Van't Foot, Owners

countrysupply@xplornet.com

Sylvain Cheff construction

General Contractor – Projects Manager
Agricultural building specialist



Residential • Commercial
and Agricultural



Forms • Footings • Foundations • Floors
Steel and Wood Structures

BOURGET, ON Tel. 613 487-3555 Fax 613 487-1817



South Stormont Holstein Show

NEWINGTON—
THE STORMONT
HOLSTEIN CLUB
HOSTED THEIR ANNUAL
HOLSTEIN SHOW AT THE
STORMONT COUNTY FAIR
ON SAT., SEPT. 1, AT THE
NEWINGTON FAIRGROUNDS.
THE EVENT WAS A POPULAR
HIT WITH MANY CATTLE
AND A LARGE CROWD ON
HAND. THE WINNERS WERE:

Junior Calf

1 - Redlodge Impression Ashling, from Redlodge Farms Inc. Finch, 2 - Knonaudale Dm Sunkissed from Ferme Prospere Inc, Knonaudale Farms Inc. Orleans, 3 - Knonaudale Unix Mudrun, Knonaudale Farms Inc. Crysler.

Intermediate Calf

1 - Knonaudale Lululemon from Knonaudale Farms Inc, Crysler, 2 - Rosevine Doorman Fiona from Rosevine Farms, Berwick, 3 - Murrayholm Callen Lollipop from Verena Farms, Crysler.

Senior Calf

1 - Redlodge Control Ardina from Redlodge Farms Inc, Finch, 2 - Vogue Light My Fire Amaze from Ashburn Holsteins, Berwick, 3 - Deluxe Doorman Dazzle from Ashburn Holsteins, Berwick, 3 - Deluxe Doorman Dazzle from Ashburn Holsteins, Berwick.

Milking Yearling

1 - Wenallt Kingpin Mystique from Wenallt Holsteins Inc, Crysler, 2 - Rosevine Denim Cinnamon from Rosevine Farms, Berwick, 3 - Redlodge Solomon Castiel from Redlodge Farms Inc, Finch.

Female Summer/Junior Yearling

1 - Knonaudale Olive from Knonaudale Farms Inc, Sunnyside Farms Inc, Crysler, 2 - Knonaudale Pretty Mud from Knonaudale Farms Inc, Crysler, 3 - Comco Hypnotic Obara from Wenallt Holsteins Inc, Crysler.

Intermediate/Senior Yearling

1 - Redlodge Windbrook

Alessia from Redlodge Farms Inc, Finch, 2 - Limbra G W Atwood Elvira, Huybregts Farms Ltd, Crysler, 3 - Knonaudale Igg from Knonaudale Farms Inc, Crysler.

Junior Herd

1 - Christoph Uhr, Crysler, 2 - Monica Kagi, Finch and 3 - Barrie Smith, Berwick.

Junior two-year old cow, in milk, dry or not yet calved for the first time

1 - Limbra Pitbull Glow from Huybregts Farms Ltd, Crysler, 2 - Wenallt Beemer North from Wenallt Holsteins Inc, Crysler, 3 - Wenallt Solomon Shadow from Wenallt Holsteins Inc, Crysler.

Senior two-year-old cow, in milk, dry or not yet calved for the first time

1 - Redlodge Chip Analia from Redlodge Farms Inc, Finch, 2 - Wenallt Lumineer Mischief from Wenallt Holsteins Inc, Crysler, 3 - Limbra

Kalif Pamela from Huybregts Farms Ltd, Crysler.

Junior three-year- old cow, in milk or dry

1 - Knonaudale Pepperette from Knonaudale Farms Inc, Crysler, 2 - Redlodge Doorman Whisky, Redlodge Farms Inc, Finch, 3 - Wenallt Seaver Treasure from Wenallt Holsteins Inc, Crysler.

Senior three-year old cow, in milk or dry

1 - Knonaudale Oregon, Best Udder, Grand Champion - Honourable Mention, Best Udder of Show - 3 - Knonaudale Farms Inc, Crysler, 2 - Paramount-Mb Crvt Ashtabula, Highest BCA at show Wenallt Holsteins Inc, Crysler, 3 - Don-Hope Demp Sasha from Verena Farms, Crysler.

Four-year old cow, in milk or dry

1 - Brabantdale Shottle Sparky, Best Udder, Grand Champion - Reserve, Best Udder Of Show - Second; from Roclane Holsteins, Crysler, 2 - Redlodge Planner Whoopi from Redlodge Farms Inc, Finch, 3 - Limbra G W Atwood Maggie from Huybregts Farms Ltd, Crysler.

Five-year-old cow, in milk or dry

1 - Devans Fever Rosey, Best Udder; from Wenallt Holsteins Inc, Crysler, 2 - Redlodge Snow Cloud from Redlodge Farms Inc, Finch, 3 - Redlodge Windbrook Walana from Redlodge Farms Inc, Finch.

Mature Cow

1 - Knonaudale Muddy, Best Udder; Grand Champion; Best Udder Of Show - First; from Knonaudale Farms Inc, Crysler, 2 - Limbra Windbrook Penny from Huybregts Farms

Ltd, Crysler, 3 - Limbra Duplex Cally from Huybregts Farms Ltd, Crysler.

Breeder's Herd

1 - Christoph Uhr, Crysler, 2 - Monica Kagi, Finch and 3 - Huybregts Farms Ltd., Crysler.

Junior Exhibitor Banner

1 - Knonaudale Farms Inc. Crysler, 2 - Redlodge Farms Inc. Finch, 3 - Huybregts Farms Ltd. Crysler.

Junior Breeder Banner

1 - Knonaudale Farms

Inc (Knonaudale) Crysler, 2 - Redlodge Farms Inc. (Redlodge) Finch and 3 - Rosevine Farms (Rosevine) Berwick.

Premier Exhibitor Banner

1 - Redlodge Farms Inc. Finch, 2 - Wenallt Holsteins Inc. Crysler and 3 - Huybregts Farms Ltd. Crysler.

Premier Breeder Banner

1 - Redlodge Farms Inc (Redlodge) Finch, 2 - Huybregts Farms Ltd (Limbra) Crysler, and 3 - Knonaudale Farms Inc (Knonaudale) Crysler.



Beating white mold

Glengarry Soil and Crop held a twilight meeting with a barbecue, on Wed., Sept. 5, at Newbrabant Farms (Sommer/Trottier farm) in Lancaster. A crop tour was given to view the test plots by Kent Ag Service for white mold tolerance. This field was one of the worst fields in the area for white mold. Farmers were given the opportunity to see the various varieties and hear of the different techniques to keep white mold out of the fields.

Vogel photo

Foundation / Wall Concrete Repair

Kingston, Ontario E-mail: robsangers@me.com

613-561-1802

Sangers Shotcrete
foundation & concrete repair

ROASTING SINCE 1988

Derks ELEVATOR INC.

Your Direct Source for:

Roasted soybeans and soybean meal

Our new, state of the art facility is now fully operational!

Delivery Available
Custom Roasting
Fully Licensed Elevator

Call for a quote today

613.448.2522
www.DerksElevator.com
3063 Forward Road South
Chesterville, ON, K0C 1H0

25 YEARS ANS PROPANE LEVAC

www.propanelevac.ca

ST. ISIDORE
613-524-2079 • 1-800-465-4927
PERTH • KINGSTON • KAZABAZUA, QC

Half-sized machinery highlight of fall festival

by Tom Van Dusen
AgriNews Staff Writer

DUNVEGAN – GARRY WILSON’S HALF-SIZED COLLECTION OF FARM MACHINERY WAS ONE OF THE HIGHLIGHTS OF THE RECENT ANNUAL HARVEST FALL FESTIVAL AT GLENGARRY PIONEER MUSEUM IN THIS HAMLET.

Starting from scratch, Wilson builds spitting-image, working tractors and implements, most of them representing his favourite brand, Massey-Harris. To date, he has built about a dozen of the miniatures.

As with most eastern Ontario events in September, the 2018 one-day Fall Festival experienced almost perfect weather conditions which drew hundreds of people for the traditional artisans, kids’ activities, vendors’ market, antique equipment demon-

strations, rooster crowing contest, rare breeds exhibit, ice cream-making, and signature horse-drawn carriage parade through the tiny community.

The museum grounds are home to several relocated historic buildings, including the 1860s Star Inn, once a stage stop between Ottawa and Montreal. It’s believed to be eastern Ontario’s oldest intact tavern.

What drives Garry Wilson? For one thing, it’s the desire to keep busy because if you don’t, you just fade away; and the desire to impart information about the old days and the old ways to rural audiences.

With all of them made from scratch, Wilson can haul most of his half-sized collection together on a 28-foot flatbed. He also collects and restores full-sized Massey-Harris machines

with 41 units in that group.

All of the mini-me machines work and all have been made authentically based on their full-sized versions; his favourite creation is a working Massey-Harris thresher which took six months at close to full-time to build.

At 78, he grows 200 acres of hay which he sells standing when he’s not busy with the machinery which he does for love, not money. None of the models are for sale.



Half-sized but full fun

Garry Wilson’s half-sized collection was on display for visitors to see during the fun fall event.

Van Dusen photo



Horsing around

The horse parade was a delightful highlight of the Harvest Fall Festival at the Glengarry Pioneer Museum.

Van Dusen photo



Linda's

Bookkeeping & Consulting



Linda Vogel, CPB
www.lindasbookkeeping.com

Specializing in Farm Bookkeeping and Taxes

<p>APPLE HILL OFFICE 3995 Lafleur Rd., Apple Hill, ON Tel.: 613-363-0023 linda@lindasbookkeeping.com</p>	<p>PERTH OFFICE 40 Sunset Blvd. Suite 18, Perth, ON Tel.: 613-466-0661 supportteam@lindasbookkeeping.com</p>
-------------------------------------------------------------------------------------------------------------------------------------------------------------------------------------------------------------------------	-----------------------------------------------------------------------------------------------------------------------------------------------------------------------------------------------------------------------------------







INSTITUTE OF PROFESSIONAL BOOKKEEPERS OF CANADA
CPB - CERTIFIED PROFESSIONAL BOOKKEEPER



CANADIAN ASSOCIATION OF FARM ADVISORS





E-Subscriptions

Now available at



Do not miss out on any issues of the *Eastern Ontario AgriNews*.
Stay connected and informed on your
 • Desktop Computer • Tablet • Mobile Device

With a valid e-mail address, you can receive an electronic version of
 The *Eastern Ontario AgriNews* for only
 \$36.75 per year (includes GST).
 To subscribe to an E-Subscription go to
www.agrinews.ca/membership-join and sign up today!

BROADGRAIN




**2019 DRY BEAN & IDENTITY PRESERVED
 SOYBEAN PREMIUMS AVAILABLE**

Buyers of Corn, Soybeans (Non-GMO/IP/RR), Wheat and Dry Beans

BroadGrain Commodities Inc.
 10803 Cook Rd., Brinston, Ontario K0E 1C0 1-613-652-2069
www.broadgrain.com



Wood Expo expansion plans already in the mill

by Tom Van Dusen
AgriNews Staff Writer

RICEVILLE – AFTER EXPERIENCING A SLIGHT GROWTH SPURT IN 2018, ORGANIZERS OF THE RICEVILLE WOOD AND FOREST EXHIBITION ARE ALREADY LOOKING AT FURTHER EXPANSION NEXT YEAR.

“We want to teach more about the healing powers of forests,” said Jean Saint Pierre, president of Boies Est which hosts Wood Expo, noting there are already exhibitors at the show who specialize in that area.

“The overall message is to respect the forest and its gifts of pollution and erosion reduction, shade, wildlife habitat, and raw material for practical and ornamental products. Also important to remember is the fact that eastern Ontario forests provide a living for many residents.”

Pleased with the 2018 results, the president of eastern Ontario’s largest association of woodlot owners said next year’s plans include creating an education and information trail through a forest on the edge of Riceville Fairgrounds.

With more than 200 club members, Saint Pierre underlined that the exhibition has a lot of volunteer manpower. Last year for the first time, it broke away from Glengarry

Pioneer Museum in Dunvegan to go its own way at the fairgrounds in this Prescott County hamlet.

Saint Pierre said half a dozen new exhibitors were signed up this year for a total of 55. While he didn’t have an exact number, his feeling was that visitor traffic was up under perfect sunny skies. The emphasis was on the many contributions of wood and the forest, including to the environment, knowledge, health, leisure, income and the arts, with exhibitors representing every aspect.

Following the formula of the inaugural year, there were demonstrations, children’s corner, musical entertainment in a designated pavilion, and baked beans and macaroni lunch served by La Binerie of Plantagenet which also stages its own popular annual festival.

A cross-section of groups represented included commercial equipment suppliers, artisans, and related organizations. Everyone involved in the forestry industry including, for example, those who repair equipment, are welcome. A highlight was an auction of hardwood boards, blocks, burls and slabs, an event transferred from Dunvegan. Admission was \$10 and parking was free.

Once again this year, the show was co-sponsored

Special skills

One of many artisans on hand at Wood Expo, showed off their talents, carving a rooster while using a chainsaw.

Van Dusen photo

by Boies Est, South Nation Conservation and the Ontario Woodlot Association; while Saint Pierre saw some blanks he hopes to fill in, organizers made full use of the site, spreading exhibitors from one end to the other.



Warm welcome

Jean Saint Pierre, president of Boies Est host of Wood Expo welcomed guests to the event.

Van Dusen photo



EVENTUALLY

WE ALL GROW UP. HOW WELL? THAT'S UP TO YOU.

Growing up can be difficult. But when you make the right investments for your farm, challenges can turn into opportunity.

Opportunity for exceptional growth, improved health and a bright future. Our premium milk replacer and colostrum products promise these returns and more. We offer premium quality, balanced nutrition and hands-on product research.

Your young animal specialist blending the art and science of young animal nutrition.

Proudly Canadian for over 40 years!



www.GroberNutrition.com | 1.800.265.7863 |



Mahindra
DEALER
DAYS



**HURRY FOR SPECIAL DEALER DAYS SAVINGS
ON THE 25.6 HP MAHINDRA MAX 26 HST!**

REIS EQUIPMENT CENTER LTD.

Winchester, Ontario
613-774-2273

Renfrew, Ontario
613-432-5612

Ottawa, Ontario
613-836-3033

See dealer for details.

Mahindra
Tractors & Utility Vehicles

MahindraUSA.com © 2018 Mahindra USA Inc.